



Full wwPDB X-ray Structure Validation Report ⓘ

Apr 18, 2026 – 03:05 PM UTC

PDB ID : 3OWN / pdb_00003own
Title : Potent macrocyclic renin inhibitors
Authors : Borkakoti, N.; Derbyshire, D.
Deposited on : 2010-09-20
Resolution : 2.00 Å(reported)

This is a Full wwPDB X-ray Structure Validation Report for a publicly released PDB entry.

We welcome your comments at validation@mail.wwpdb.org

A user guide is available at

<https://www.wwpdb.org/validation/2017/XrayValidationReportHelp>

with specific help available everywhere you see the ⓘ symbol.

The types of validation reports are described at

<http://www.wwpdb.org/validation/2017/FAQs#types>.

The following versions of software and data (see [references ⓘ](#)) were used in the production of this report:

MolProbity : 4-5-2 with Phenix2.0
Mogul : 2022.3.0, CSD as543be (2022)
Xtrriage (Phenix) : 2.0
EDS : 3.0
Buster-report : wwPDB partial adaption of 1.1.7 (2018)
Percentile statistics : 20250101.v01 (using entries in the PDB archive January 1st 2025)
CCP4 : 9.0.010 (Gargrove)
Density-Fitness : 1.0.12
Ideal geometry (proteins) : Engh & Huber (2001)
Ideal geometry (DNA, RNA) : Parkinson et al. (1996)
Validation Pipeline (wwPDB-VP) : 2.49

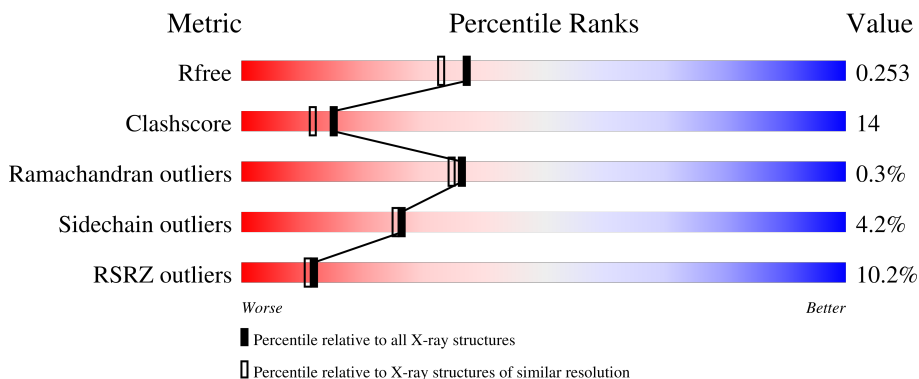
1 Overall quality at a glance

The following experimental techniques were used to determine the structure:

X-RAY DIFFRACTION

The reported resolution of this entry is 2.00 Å.

Percentile scores (ranging between 0-100) for global validation metrics of the entry are shown in the following graphic. The table shows the number of entries on which the scores are based.



Metric	Whole archive (#Entries)	Similar resolution (#Entries, resolution range(Å))
R_{free}	180053	10052 (2.00-2.00)
Clashscore	190562	11152 (2.00-2.00)
Ramachandran outliers	187476	11031 (2.00-2.00)
Sidechain outliers	187428	11029 (2.00-2.00)
RSRZ outliers	180081	10067 (2.00-2.00)

The table below summarises the geometric issues observed across the polymeric chains and their fit to the electron density. The red, orange, yellow and green segments of the lower bar indicate the fraction of residues that contain outliers for ≥ 3 , 2, 1 and 0 types of geometric quality criteria respectively. A grey segment represents the fraction of residues that are not modelled. The numeric value for each fraction is indicated below the corresponding segment, with a dot representing fractions $\leq 5\%$. The upper red bar (where present) indicates the fraction of residues that have poor fit to the electron density. The numeric value is given above the bar.

Mol	Chain	Length	Quality of chain
1	A	341	
1	B	341	

The following table lists non-polymeric compounds, carbohydrate monomers and non-standard residues in protein, DNA, RNA chains that are outliers for geometric or electron-density-fit criteria:

Mol	Type	Chain	Res	Chirality	Geometry	Clashes	Electron density
3	NA	A	803	-	-	-	X

2 Entry composition [i](#)

There are 6 unique types of molecules in this entry. The entry contains 5603 atoms, of which 0 are hydrogens and 0 are deuteriums.

In the tables below, the ZeroOcc column contains the number of atoms modelled with zero occupancy, the AltConf column contains the number of residues with at least one atom in alternate conformation and the Trace column contains the number of residues modelled with at most 2 atoms.

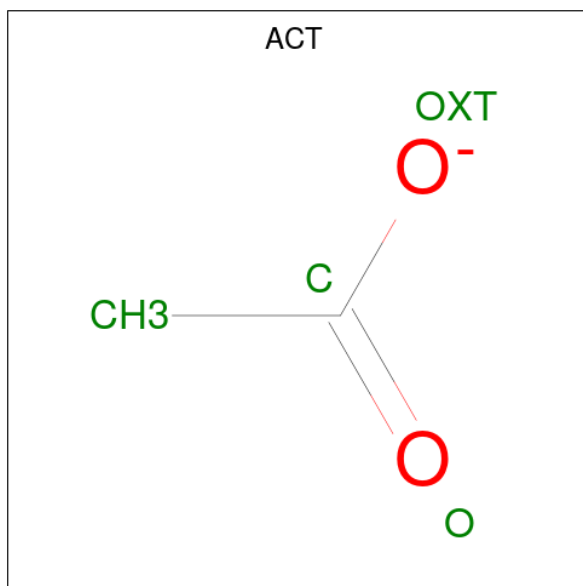
- Molecule 1 is a protein called Renin.

Mol	Chain	Residues	Atoms					ZeroOcc	AltConf	Trace
			Total	C	N	O	S			
1	A	334	2574	1644	417	499	14	0	0	0
1	B	334	2574	1644	416	500	14	0	0	0

There are 2 discrepancies between the modelled and reference sequences:

Chain	Residue	Modelled	Actual	Comment	Reference
A	338	HIS	-	expression tag	UNP P00797
B	338	HIS	-	expression tag	UNP P00797

- Molecule 2 is ACETATE ION (CCD ID: ACT) (formula: C₂H₃O₂).



Mol	Chain	Residues	Atoms			ZeroOcc	AltConf
			Total	C	O		
2	A	1	4	2	2	0	0

Continued on next page...

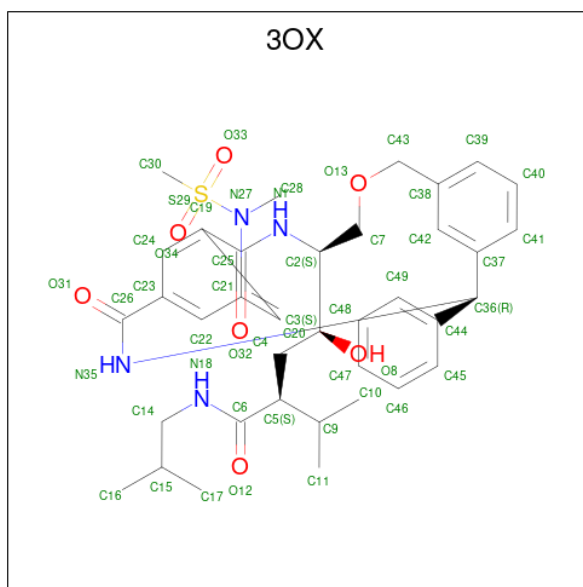
Continued from previous page...

Mol	Chain	Residues	Atoms			ZeroOcc	AltConf
2	A	1	Total	C	O	0	0
			4	2	2		
2	A	1	Total	C	O	0	0
			4	2	2		

- Molecule 3 is SODIUM ION (CCD ID: NA) (formula: Na).

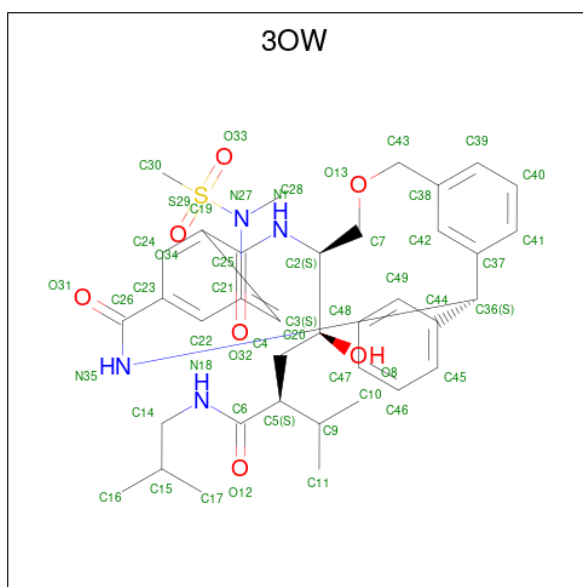
Mol	Chain	Residues	Atoms		ZeroOcc	AltConf
3	A	2	Total	Na	0	0
			2	2		

- Molecule 4 is (2S,4S)-4-hydroxy-2-(1-methylethyl)-4-[(4R,13S)-18-[methyl(methylsulfonyl)amino]-2,15-dioxo-4-phenyl-11-oxa-3,14-diazatricyclo[14.3.1.1 5,9]henicosa-1(20),5(21),6,8,16,18-hexaen-13-yl]-N-(2-methylpropyl)butanamide (CCD ID: 3OX) (formula: C₃₇H₄₈N₄O₇S).



Mol	Chain	Residues	Atoms					ZeroOcc	AltConf
4	A	1	Total	C	N	O	S	0	0
			49	37	4	7	1		

- Molecule 5 is (2S,4S)-4-hydroxy-2-(1-methylethyl)-4-[(4S,13S)-18-[methyl(methylsulfonyl)amino]-2,15-dioxo-4-phenyl-11-oxa-3,14-diazatricyclo[14.3.1.1 5,9]henicosa-1(20),5(21),6,8,16,18-hexaen-13-yl]-N-(2-methylpropyl)butanamide (CCD ID: 3OW) (formula: C₃₇H₄₈N₄O₇S).



Mol	Chain	Residues	Atoms					ZeroOcc	AltConf
			Total	C	N	O	S		
5	B	1	49	37	4	7	1	0	0

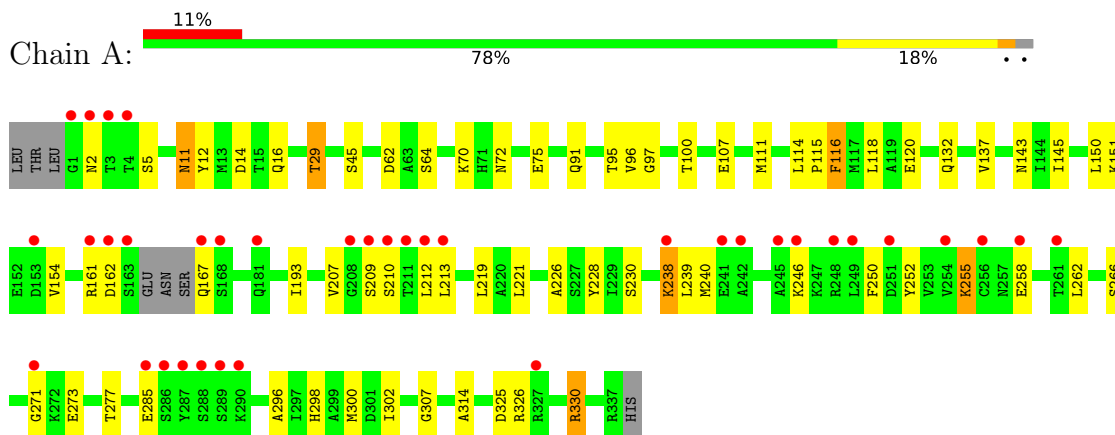
- Molecule 6 is water.

Mol	Chain	Residues	Atoms		ZeroOcc	AltConf
6	A	182	Total	O	0	0
			182	182		
6	B	161	Total	O	0	0
			161	161		

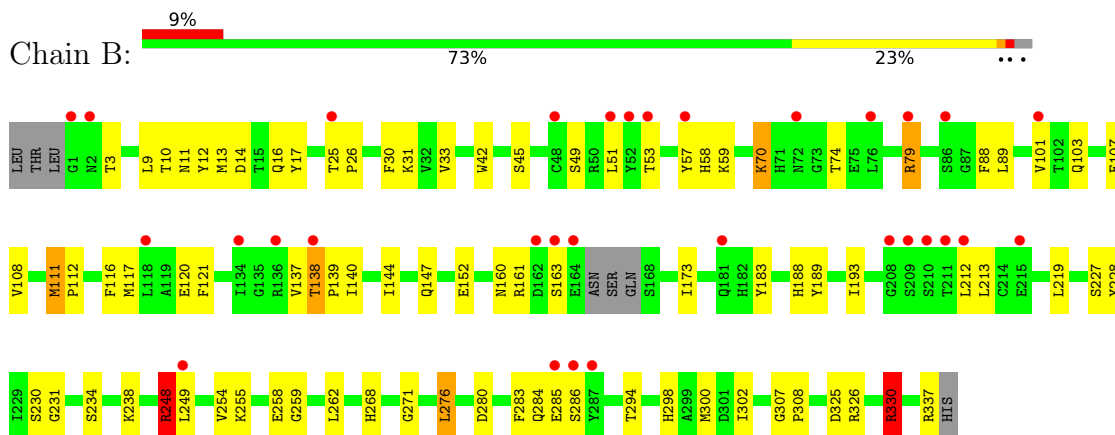
3 Residue-property plots [i](#)

These plots are drawn for all protein, RNA, DNA and oligosaccharide chains in the entry. The first graphic for a chain summarises the proportions of the various outlier classes displayed in the second graphic. The second graphic shows the sequence view annotated by issues in geometry and electron density. Residues are color-coded according to the number of geometric quality criteria for which they contain at least one outlier: green = 0, yellow = 1, orange = 2 and red = 3 or more. A red dot above a residue indicates a poor fit to the electron density ($RSRZ > 2$). Stretches of 2 or more consecutive residues without any outlier are shown as a green connector. Residues present in the sample, but not in the model, are shown in grey.

- Molecule 1: Renin



- Molecule 1: Renin



4 Data and refinement statistics i

Property	Value	Source
Space group	P 21 3	Depositor
Cell constants a, b, c, α , β , γ	141.83Å 141.83Å 141.83Å 90.00° 90.00° 90.00°	Depositor
Resolution (Å)	70.89 – 2.00 70.89 – 2.00	Depositor EDS
% Data completeness (in resolution range)	100.0 (70.89-2.00) 99.1 (70.89-2.00)	Depositor EDS
R_{merge}	0.14	Depositor
R_{sym}	0.14	Depositor
$\langle I/\sigma(I) \rangle$ ¹	2.60 (at 2.00Å)	Xtrriage
Refinement program	REFMAC 5.2.0019	Depositor
R, R_{free}	0.217 , 0.254 0.215 , 0.253	Depositor DCC
R_{free} test set	3227 reflections (5.07%)	wwPDB-VP
Wilson B-factor (Å ²)	24.2	Xtrriage
Anisotropy	0.000	Xtrriage
Bulk solvent k_{sol} (e/Å ³), B_{sol} (Å ²)	0.37 , 44.4	EDS
L-test for twinning ²	$\langle L \rangle = 0.50$, $\langle L^2 \rangle = 0.33$	Xtrriage
Estimated twinning fraction	0.027 for l,-k,h	Xtrriage
F_o, F_c correlation	0.93	EDS
Total number of atoms	5603	wwPDB-VP
Average B, all atoms (Å ²)	24.0	wwPDB-VP

Xtrriage's analysis on translational NCS is as follows: *The largest off-origin peak in the Patterson function is 2.34% of the height of the origin peak. No significant pseudotranslation is detected.*

¹Intensities estimated from amplitudes.

²Theoretical values of $\langle |L| \rangle$, $\langle L^2 \rangle$ for acentric reflections are 0.5, 0.333 respectively for untwinned datasets, and 0.375, 0.2 for perfectly twinned datasets.

5 Model quality [i](#)

5.1 Standard geometry [i](#)

Bond lengths and bond angles in the following residue types are not validated in this section: 3OW, ACT, 3OX, NA

The Z score for a bond length (or angle) is the number of standard deviations the observed value is removed from the expected value. A bond length (or angle) with $|Z| > 5$ is considered an outlier worth inspection. RMSZ is the root-mean-square of all Z scores of the bond lengths (or angles).

Mol	Chain	Bond lengths		Bond angles	
		RMSZ	# Z >5	RMSZ	# Z >5
1	A	0.81	0/2633	1.05	3/3570 (0.1%)
1	B	0.79	0/2633	1.07	6/3570 (0.2%)
All	All	0.80	0/5266	1.06	9/7140 (0.1%)

There are no bond length outliers.

All (9) bond angle outliers are listed below:

Mol	Chain	Res	Type	Atoms	Z	Observed(°)	Ideal(°)
1	B	330	ARG	NE-CZ-NH1	7.05	128.55	121.50
1	B	330	ARG	NE-CZ-NH2	-6.41	113.43	119.20
1	B	111	MET	CA-C-N	6.12	125.88	119.76
1	B	111	MET	C-N-CA	6.12	125.88	119.76
1	B	231	GLY	N-CA-C	-5.98	102.21	111.12
1	B	330	ARG	CB-CG-CD	5.34	123.58	111.30
1	A	213	LEU	N-CA-C	5.32	117.91	109.50
1	A	314	ALA	N-CA-C	5.30	117.06	111.28
1	A	116	PHE	N-CA-C	5.29	118.99	112.54

There are no chirality outliers.

There are no planarity outliers.

5.2 Too-close contacts [i](#)

In the following table, the Non-H and H(model) columns list the number of non-hydrogen atoms and hydrogen atoms in the chain respectively. The H(added) column lists the number of hydrogen atoms added and optimized by MolProbity. The Clashes column lists the number of clashes within the asymmetric unit, whereas Symm-Clashes lists symmetry-related clashes.

Mol	Chain	Non-H	H(model)	H(added)	Clashes	Symm-Clashes
1	A	2574	0	2509	60	0
1	B	2574	0	2507	79	0
2	A	12	0	9	0	0
3	A	2	0	0	0	0
4	A	49	0	47	8	0
5	B	49	0	48	9	0
6	A	182	0	0	14	0
6	B	161	0	0	6	0
All	All	5603	0	5120	141	0

The all-atom clashscore is defined as the number of clashes found per 1000 atoms (including hydrogen atoms). The all-atom clashscore for this structure is 14.

All (141) close contacts within the same asymmetric unit are listed below, sorted by their clash magnitude.

Atom-1	Atom-2	Interatomic distance (Å)	Clash overlap (Å)
1:B:228:TYR:H	5:B:501:3OW:H30	1.19	1.05
1:B:300:MET:HE3	1:B:302:ILE:HD11	1.07	1.03
1:B:212:LEU:HD12	1:B:213:LEU:HD22	1.39	1.01
1:A:300:MET:HE3	1:A:302:ILE:HD11	1.45	0.97
1:B:300:MET:HE3	1:B:302:ILE:CD1	1.96	0.95
1:B:16:GLN:HE22	1:B:120:GLU:H	1.17	0.92
1:A:16:GLN:HE22	1:A:120:GLU:H	0.97	0.91
1:B:300:MET:CE	1:B:302:ILE:HD11	1.99	0.89
1:A:210:SER:HB3	1:A:212:LEU:HD12	1.56	0.86
1:B:79:ARG:HH11	1:B:79:ARG:CG	1.90	0.84
1:B:212:LEU:HD12	1:B:213:LEU:CD2	2.07	0.83
1:A:228:TYR:H	4:A:500:3OX:H30	1.44	0.82
1:A:16:GLN:NE2	1:A:120:GLU:H	1.79	0.81
1:B:228:TYR:H	5:B:501:3OW:C30	1.94	0.80
1:B:79:ARG:HH11	1:B:79:ARG:HG3	1.49	0.78
1:B:160:ASN:HD22	1:B:161:ARG:H	1.30	0.77
1:A:72:ASN:ND2	6:A:518:HOH:O	2.11	0.77
1:B:49:SER:OG	1:B:51:LEU:HG	1.86	0.76
1:A:271:GLY:HA2	6:A:475:HOH:O	1.84	0.76
1:B:325:ASP:OD2	1:B:330:ARG:HD2	1.86	0.75
1:B:58:HIS:HE1	1:B:116:PHE:O	1.68	0.75
1:A:210:SER:HB3	1:A:212:LEU:CD1	2.17	0.75
1:A:228:TYR:H	4:A:500:3OX:C30	1.99	0.75
1:A:226:ALA:HB1	4:A:500:3OX:H30B	1.70	0.73
1:A:11:ASN:HD21	1:A:14:ASP:H	1.34	0.73
1:B:228:TYR:N	5:B:501:3OW:H30	2.01	0.71

Continued on next page...

Continued from previous page...

Atom-1	Atom-2	Interatomic distance (Å)	Clash overlap (Å)
1:B:193:ILE:HD13	1:B:219:LEU:HD22	1.73	0.70
1:B:45:SER:HB2	1:B:107:GLU:HB3	1.75	0.68
1:B:137:VAL:HG23	6:B:371:HOH:O	1.93	0.67
1:B:11:ASN:HD21	1:B:14:ASP:H	1.41	0.67
1:A:193:ILE:CD1	1:A:219:LEU:HD22	2.25	0.66
1:A:150:LEU:HD12	6:A:343:HOH:O	1.94	0.66
1:A:228:TYR:N	4:A:500:3OX:H30	2.12	0.65
1:A:145:ILE:HG12	6:A:343:HOH:O	1.96	0.64
1:A:193:ILE:HD13	1:A:219:LEU:HD22	1.79	0.63
1:A:100:THR:HG23	6:A:489:HOH:O	1.97	0.63
1:B:193:ILE:CD1	1:B:219:LEU:HD22	2.30	0.61
1:B:160:ASN:HD22	1:B:161:ARG:N	1.98	0.61
1:A:11:ASN:HD21	1:A:14:ASP:N	2.00	0.60
1:A:72:ASN:ND2	6:A:478:HOH:O	2.35	0.59
5:B:501:3OW:C30	5:B:501:3OW:C22	2.82	0.58
1:A:325:ASP:OD2	1:A:330:ARG:HD2	2.04	0.58
1:A:95:THR:HG21	6:A:505:HOH:O	2.04	0.57
1:A:16:GLN:HE22	1:A:120:GLU:N	1.83	0.56
1:A:11:ASN:ND2	1:A:14:ASP:H	2.03	0.56
1:B:294:THR:HG22	6:B:354:HOH:O	2.06	0.56
1:A:11:ASN:C	1:A:11:ASN:HD22	2.13	0.56
1:B:286:SER:HA	6:B:398:HOH:O	2.05	0.56
1:B:326:ARG:HD2	6:B:388:HOH:O	2.06	0.55
1:B:79:ARG:CG	1:B:79:ARG:NH1	2.59	0.55
1:A:325:ASP:HB3	1:A:330:ARG:HG3	1.86	0.55
1:B:33:VAL:HG22	5:B:501:3OW:H46	1.88	0.55
1:B:16:GLN:NE2	1:B:120:GLU:H	1.96	0.55
1:A:207:VAL:HG21	1:A:239:LEU:CD1	2.37	0.55
1:B:79:ARG:NH1	6:B:483:HOH:O	2.38	0.55
1:B:188:HIS:CD2	6:B:387:HOH:O	2.61	0.54
1:B:255:LYS:HB2	1:B:258:GLU:HG2	1.89	0.54
1:B:11:ASN:HD22	1:B:11:ASN:C	2.16	0.53
1:A:210:SER:O	1:A:212:LEU:N	2.40	0.53
1:A:132:GLN:HE21	4:A:500:3OX:H17	1.74	0.53
1:B:11:ASN:HD21	1:B:14:ASP:N	2.08	0.50
1:B:79:ARG:HH11	1:B:79:ARG:HG2	1.70	0.50
1:B:11:ASN:ND2	1:B:14:ASP:H	2.08	0.50
1:B:212:LEU:CD1	1:B:213:LEU:HD22	2.26	0.50
1:B:101:VAL:HG21	1:B:144:ILE:HG12	1.94	0.50
1:A:29:THR:HG22	6:A:422:HOH:O	2.12	0.49
1:B:254:VAL:HG21	1:B:262:LEU:HD11	1.93	0.49

Continued on next page...

Continued from previous page...

Atom-1	Atom-2	Interatomic distance (Å)	Clash overlap (Å)
1:A:250:PHE:O	1:A:298:HIS:HD2	1.96	0.48
1:B:57:TYR:CB	1:B:117:MET:HE1	2.43	0.48
1:B:234:SER:O	1:B:238:LYS:HG3	2.14	0.47
1:A:111:MET:HE2	1:A:116:PHE:HB3	1.96	0.47
1:A:246:LYS:HD2	1:A:246:LYS:H	1.79	0.47
1:A:11:ASN:ND2	1:A:11:ASN:C	2.73	0.47
1:B:11:ASN:HD22	1:B:12:TYR:N	2.12	0.47
1:B:144:ILE:O	1:B:147:GLN:HG2	2.13	0.47
1:B:160:ASN:ND2	1:B:161:ARG:H	2.03	0.47
1:A:45:SER:HB2	1:A:107:GLU:HB3	1.96	0.46
1:B:283:PHE:HD2	1:B:294:THR:HG23	1.80	0.46
1:A:5:SER:OG	1:A:97:GLY:O	2.30	0.46
1:A:240:MET:HG3	1:A:252:TYR:CE2	2.51	0.46
1:B:9:LEU:HD11	1:B:173:ILE:HG13	1.98	0.45
1:B:33:VAL:HG23	1:B:121:PHE:CE2	2.52	0.45
1:A:238:LYS:HA	1:A:238:LYS:HE2	1.98	0.45
1:B:53:THR:O	1:B:57:TYR:HD1	1.99	0.45
4:A:500:3OX:C30	4:A:500:3OX:C22	2.94	0.45
1:B:268:HIS:HE1	1:B:271:GLY:HA2	1.81	0.45
1:B:254:VAL:HG12	1:B:258:GLU:HG3	1.99	0.45
1:A:228:TYR:CA	4:A:500:3OX:H30	2.47	0.45
1:B:276:LEU:HB3	1:B:280:ASP:HB2	1.99	0.44
1:A:302:ILE:O	1:A:307:GLY:HA3	2.18	0.44
1:B:189:TYR:CD2	1:B:330:ARG:HD3	2.52	0.44
1:A:167:GLN:HB2	6:A:460:HOH:O	2.16	0.44
1:A:277:THR:OG1	1:B:31:LYS:CE	2.65	0.44
1:B:53:THR:O	1:B:57:TYR:CD1	2.70	0.44
1:A:207:VAL:HG21	1:A:239:LEU:HD12	2.00	0.44
1:B:10:THR:O	1:B:17:TYR:HA	2.18	0.44
1:A:298:HIS:HE1	6:A:462:HOH:O	1.99	0.44
1:A:62:ASP:OD1	1:A:64:SER:HB2	2.18	0.44
1:B:160:ASN:ND2	1:B:161:ARG:N	2.63	0.44
1:A:266:SER:HB3	1:A:273:GLU:HG3	2.00	0.43
5:B:501:3OW:H22	5:B:501:3OW:H30A	2.00	0.43
1:B:230:SER:HA	1:B:298:HIS:O	2.18	0.43
1:A:161:ARG:NH2	6:A:442:HOH:O	2.51	0.43
1:B:138:THR:HA	1:B:139:PRO:HD3	1.97	0.43
1:B:212:LEU:CD1	1:B:213:LEU:CD2	2.88	0.43
1:B:255:LYS:HB2	1:B:258:GLU:CD	2.44	0.43
1:A:11:ASN:HD22	1:A:12:TYR:N	2.17	0.43
1:B:111:MET:HA	1:B:112:PRO:HD2	1.91	0.43

Continued on next page...

Continued from previous page...

Atom-1	Atom-2	Interatomic distance (Å)	Clash overlap (Å)
1:B:227:SER:H	5:B:501:3OW:H30B	1.83	0.43
1:B:254:VAL:CG1	1:B:258:GLU:HG3	2.49	0.43
1:A:230:SER:HA	1:A:298:HIS:O	2.19	0.42
1:A:228:TYR:N	4:A:500:3OX:C30	2.76	0.42
1:A:285:GLU:HG3	6:A:477:HOH:O	2.19	0.42
1:A:11:ASN:HD21	1:A:14:ASP:HA	1.85	0.42
1:B:12:TYR:CE2	1:B:13:MET:HE2	2.54	0.42
1:B:103:GLN:OE1	1:B:140:ILE:HA	2.19	0.42
1:B:227:SER:H	5:B:501:3OW:C30	2.32	0.42
1:B:79:ARG:NH1	1:B:79:ARG:HG2	2.31	0.42
1:B:307:GLY:HA2	1:B:308:PRO:C	2.44	0.42
1:A:246:LYS:HD2	1:A:246:LYS:N	2.33	0.42
1:B:25:THR:HA	1:B:26:PRO:HA	1.94	0.42
1:A:14:ASP:OD1	1:A:162:ASP:HB2	2.19	0.42
1:B:30:PHE:CE1	1:B:59:LYS:HG2	2.55	0.42
1:B:42:TRP:CE3	1:B:108:VAL:HG21	2.55	0.42
1:B:227:SER:N	5:B:501:3OW:C30	2.83	0.42
1:A:326:ARG:HD2	6:A:417:HOH:O	2.20	0.41
1:B:11:ASN:C	1:B:11:ASN:ND2	2.77	0.41
1:B:70:LYS:NZ	1:B:70:LYS:HB2	2.35	0.41
1:B:74:THR:O	1:B:88:PHE:HA	2.21	0.41
1:A:114:LEU:HA	1:A:115:PRO:HA	1.81	0.41
1:A:132:GLN:NE2	6:A:511:HOH:O	2.53	0.41
1:A:255:LYS:HB2	1:A:258:GLU:OE1	2.20	0.41
1:B:74:THR:HB	1:B:89:LEU:HD12	2.01	0.41
1:A:143:ASN:HD22	1:A:143:ASN:HA	1.74	0.41
1:B:255:LYS:HB2	1:B:258:GLU:CG	2.51	0.41
1:A:228:TYR:HB3	1:A:296:ALA:O	2.21	0.41
1:B:183:TYR:O	1:B:337:ARG:HD3	2.20	0.41
1:B:248:ARG:HB3	1:B:249:LEU:H	1.77	0.41
1:A:70:LYS:HB2	1:A:91:GLN:HB3	2.02	0.40
1:B:259:GLY:HA3	1:B:284:GLN:OE1	2.22	0.40
1:B:79:ARG:HG3	1:B:79:ARG:NH1	2.27	0.40

There are no symmetry-related clashes.

5.3 Torsion angles [i](#)

5.3.1 Protein backbone [i](#)

In the following table, the Percentiles column shows the percent Ramachandran outliers of the chain as a percentile score with respect to all X-ray entries followed by that with respect to entries of similar resolution.

The Analysed column shows the number of residues for which the backbone conformation was analysed, and the total number of residues.

Mol	Chain	Analysed	Favoured	Allowed	Outliers	Percentiles	
1	A	330/341 (97%)	321 (97%)	8 (2%)	1 (0%)	36	35
1	B	330/341 (97%)	325 (98%)	4 (1%)	1 (0%)	36	35
All	All	660/682 (97%)	646 (98%)	12 (2%)	2 (0%)	36	35

All (2) Ramachandran outliers are listed below:

Mol	Chain	Res	Type
1	A	209	SER
1	B	248	ARG

5.3.2 Protein sidechains [i](#)

In the following table, the Percentiles column shows the percent sidechain outliers of the chain as a percentile score with respect to all X-ray entries followed by that with respect to entries of similar resolution.

The Analysed column shows the number of residues for which the sidechain conformation was analysed, and the total number of residues.

Mol	Chain	Analysed	Rotameric	Outliers	Percentiles	
1	A	284/291 (98%)	270 (95%)	14 (5%)	22	20
1	B	284/291 (98%)	274 (96%)	10 (4%)	32	32
All	All	568/582 (98%)	544 (96%)	24 (4%)	26	25

All (24) residues with a non-rotameric sidechain are listed below:

Mol	Chain	Res	Type
1	A	2	ASN
1	A	11	ASN
1	A	29	THR
1	A	75	GLU

Continued on next page...

Continued from previous page...

Mol	Chain	Res	Type
1	A	96	VAL
1	A	118	LEU
1	A	137	VAL
1	A	151	LYS
1	A	154	VAL
1	A	221	LEU
1	A	238	LYS
1	A	255	LYS
1	A	262	LEU
1	A	330	ARG
1	B	3	THR
1	B	70	LYS
1	B	79	ARG
1	B	138	THR
1	B	152	GLU
1	B	163	SER
1	B	248	ARG
1	B	276	LEU
1	B	285	GLU
1	B	330	ARG

Sometimes sidechains can be flipped to improve hydrogen bonding and reduce clashes. All (18) such sidechains are listed below:

Mol	Chain	Res	Type
1	A	11	ASN
1	A	16	GLN
1	A	132	GLN
1	A	143	ASN
1	A	167	GLN
1	A	186	ASN
1	A	191	ASN
1	A	201	GLN
1	A	298	HIS
1	A	328	ASN
1	B	2	ASN
1	B	11	ASN
1	B	16	GLN
1	B	58	HIS
1	B	160	ASN
1	B	201	GLN
1	B	268	HIS
1	B	328	ASN

5.3.3 RNA [i](#)

There are no RNA molecules in this entry.

5.4 Non-standard residues in protein, DNA, RNA chains [i](#)

There are no non-standard protein/DNA/RNA residues in this entry.

5.5 Carbohydrates [i](#)

There are no oligosaccharides in this entry.

5.6 Ligand geometry [i](#)

Of 7 ligands modelled in this entry, 2 are monoatomic - leaving 5 for Mogul analysis.

In the following table, the Counts columns list the number of bonds (or angles) for which Mogul statistics could be retrieved, the number of bonds (or angles) that are observed in the model and the number of bonds (or angles) that are defined in the Chemical Component Dictionary. The Link column lists molecule types, if any, to which the group is linked. The Z score for a bond length (or angle) is the number of standard deviations the observed value is removed from the expected value. A bond length (or angle) with $|Z| > 2$ is considered an outlier worth inspection. RMSZ is the root-mean-square of all Z scores of the bond lengths (or angles).

Mol	Type	Chain	Res	Link	Bond lengths			Bond angles		
					Counts	RMSZ	# Z > 2	Counts	RMSZ	# Z > 2
5	3OW	B	501	-	51,52,52	1.44	4 (7%)	67,74,74	2.51	17 (25%)
2	ACT	A	800	-	3,3,3	1.05	0	3,3,3	0.91	0
2	ACT	A	804	3	3,3,3	0.86	0	3,3,3	1.36	0
2	ACT	A	801	3	3,3,3	0.75	0	3,3,3	1.32	0
4	3OX	A	500	-	51,52,52	1.49	5 (9%)	67,74,74	1.76	12 (17%)

In the following table, the Chirals column lists the number of chiral outliers, the number of chiral centers analysed, the number of these observed in the model and the number defined in the Chemical Component Dictionary. Similar counts are reported in the Torsion and Rings columns. '-' means no outliers of that kind were identified.

Mol	Type	Chain	Res	Link	Chirals	Torsions	Rings
5	3OW	B	501	-	-	10/61/61/61	0/3/4/4
4	3OX	A	500	-	-	9/61/61/61	0/3/4/4

All (9) bond length outliers are listed below:

Mol	Chain	Res	Type	Atoms	Z	Observed(Å)	Ideal(Å)
4	A	500	3OX	C30-S29	-6.95	1.61	1.75
5	B	501	3OW	C30-S29	-6.69	1.61	1.75
4	A	500	3OX	S29-N27	-5.11	1.55	1.64
5	B	501	3OW	S29-N27	-4.16	1.57	1.64
4	A	500	3OX	C37-C36	-3.25	1.48	1.52
4	A	500	3OX	O33-S29	2.52	1.47	1.43
5	B	501	3OW	O33-S29	2.25	1.47	1.43
4	A	500	3OX	C7-C2	2.14	1.55	1.51
5	B	501	3OW	C36-N35	-2.09	1.44	1.46

All (29) bond angle outliers are listed below:

Mol	Chain	Res	Type	Atoms	Z	Observed(°)	Ideal(°)
5	B	501	3OW	O34-S29-C30	11.08	123.50	108.30
5	B	501	3OW	O34-S29-O33	-10.69	102.48	118.46
4	A	500	3OX	O34-S29-O33	-6.73	108.39	118.46
4	A	500	3OX	C36-N35-C26	6.13	135.42	121.78
5	B	501	3OW	O33-S29-N27	-4.89	101.55	107.14
5	B	501	3OW	C37-C36-N35	-3.99	104.06	111.23
4	A	500	3OX	O34-S29-N27	3.80	111.49	107.14
5	B	501	3OW	C14-N18-C6	3.77	129.83	122.65
4	A	500	3OX	C28-N27-S29	3.28	122.93	118.23
5	B	501	3OW	C36-N35-C26	3.21	128.93	121.78
5	B	501	3OW	C42-C37-C36	-3.16	114.54	120.57
5	B	501	3OW	C7-C2-N1	-3.07	105.30	109.66
5	B	501	3OW	C30-S29-N27	2.99	110.47	106.82
5	B	501	3OW	C28-N27-S29	2.98	122.51	118.23
4	A	500	3OX	C30-S29-N27	2.94	110.41	106.82
5	B	501	3OW	C41-C37-C36	2.93	125.68	120.75
4	A	500	3OX	C7-C2-N1	-2.88	105.57	109.66
4	A	500	3OX	C42-C37-C36	-2.86	115.12	120.57
4	A	500	3OX	C37-C36-N35	-2.77	106.27	111.23
5	B	501	3OW	C37-C42-C38	2.44	123.80	121.16
5	B	501	3OW	C40-C41-C37	-2.31	117.88	120.65
4	A	500	3OX	C41-C37-C42	2.28	121.38	118.74
4	A	500	3OX	O12-C6-C5	-2.22	119.01	121.67
5	B	501	3OW	O34-S29-N27	2.22	109.68	107.14
4	A	500	3OX	C3-C2-N1	2.20	114.11	109.97
5	B	501	3OW	C3-C2-N1	2.19	114.08	109.97
5	B	501	3OW	C23-C26-N35	-2.13	113.09	117.04
5	B	501	3OW	C43-O13-C7	2.13	117.42	112.66
4	A	500	3OX	O34-S29-C30	2.05	111.11	108.30

There are no chirality outliers.

All (19) torsion outliers are listed below:

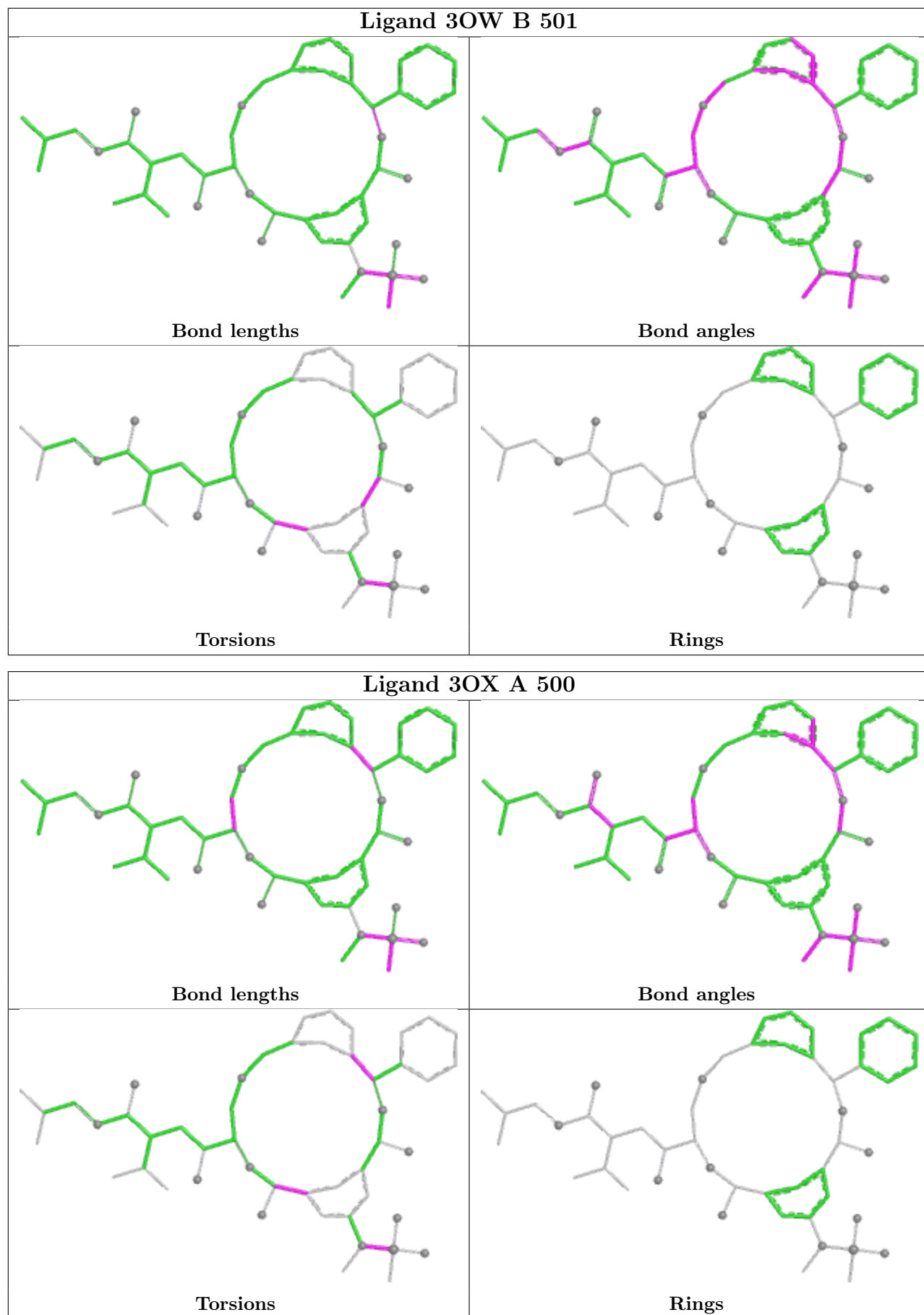
Mol	Chain	Res	Type	Atoms
4	A	500	3OX	C21-N27-S29-C30
4	A	500	3OX	C21-N27-S29-O33
4	A	500	3OX	C28-N27-S29-C30
4	A	500	3OX	C28-N27-S29-O33
5	B	501	3OW	C21-N27-S29-C30
5	B	501	3OW	C21-N27-S29-O33
5	B	501	3OW	C28-N27-S29-C30
5	B	501	3OW	C28-N27-S29-O33
4	A	500	3OX	C24-C19-C25-O32
4	A	500	3OX	C20-C19-C25-O32
5	B	501	3OW	C20-C19-C25-O32
4	A	500	3OX	C24-C19-C25-N1
5	B	501	3OW	C24-C19-C25-O32
5	B	501	3OW	C20-C19-C25-N1
4	A	500	3OX	C44-C36-C37-C41
4	A	500	3OX	C20-C19-C25-N1
5	B	501	3OW	C24-C23-C26-N35
5	B	501	3OW	C24-C19-C25-N1
5	B	501	3OW	C28-N27-S29-O34

There are no ring outliers.

2 monomers are involved in 17 short contacts:

Mol	Chain	Res	Type	Clashes	Symm-Clashes
5	B	501	3OW	9	0
4	A	500	3OX	8	0

The following is a two-dimensional graphical depiction of Mogul quality analysis of bond lengths, bond angles, torsion angles, and ring geometry for all instances of the Ligand of Interest. In addition, ligands with molecular weight > 250 and outliers as shown on the validation Tables will also be included. For torsion angles, if less than 5% of the Mogul distribution of torsion angles is within 10 degrees of the torsion angle in question, then that torsion angle is considered an outlier. Any bond that is central to one or more torsion angles identified as an outlier by Mogul will be highlighted in the graph. For rings, the root-mean-square deviation (RMSD) between the ring in question and similar rings identified by Mogul is calculated over all ring torsion angles. If the average RMSD is greater than 60 degrees and the minimal RMSD between the ring in question and any Mogul-identified rings is also greater than 60 degrees, then that ring is considered an outlier. The outliers are highlighted in purple. The color gray indicates Mogul did not find sufficient equivalents in the CSD to analyse the geometry.



5.7 Other polymers [i](#)

There are no such residues in this entry.

5.8 Polymer linkage issues [i](#)

There are no chain breaks in this entry.

6 Fit of model and data

6.1 Protein, DNA and RNA chains

In the following table, the column labelled ‘#RSRZ > 2’ contains the number (and percentage) of RSRZ outliers, followed by percent RSRZ outliers for the chain as percentile scores relative to all X-ray entries and entries of similar resolution. The OWAB column contains the minimum, median, 95th percentile and maximum values of the occupancy-weighted average B-factor per residue. The column labelled ‘Q < 0.9’ lists the number of (and percentage) of residues with an average occupancy less than 0.9.

Mol	Chain	Analysed	<RSRZ>	#RSRZ>2	OWAB(Å ²)	Q<0.9
1	A	334/341 (97%)	0.36	37 (11%) 10 9	8, 21, 44, 56	0
1	B	334/341 (97%)	0.54	31 (9%) 14 13	11, 25, 40, 59	0
All	All	668/682 (97%)	0.45	68 (10%) 12 11	8, 23, 42, 59	0

All (68) RSRZ outliers are listed below:

Mol	Chain	Res	Type	RSRZ
1	A	210	SER	9.2
1	A	211	THR	7.8
1	A	209	SER	6.3
1	A	208	GLY	6.2
1	B	164	GLU	6.0
1	B	51	LEU	5.1
1	A	212	LEU	4.7
1	B	57	TYR	4.7
1	B	209	SER	4.1
1	B	287	TYR	4.1
1	B	208	GLY	4.0
1	B	212	LEU	3.8
1	A	248	ARG	3.8
1	A	287	TYR	3.8
1	A	288	SER	3.7
1	A	271	GLY	3.5
1	A	246	LYS	3.4
1	A	238	LYS	3.3
1	A	167	GLN	3.2
1	B	163	SER	3.1
1	B	53	THR	3.1
1	B	211	THR	3.1
1	B	215	GLU	3.1
1	A	163	SER	3.1

Continued on next page...

Continued from previous page...

Mol	Chain	Res	Type	RSRZ
1	A	153	ASP	3.0
1	B	76	LEU	3.0
1	B	210	SER	3.0
1	A	4	THR	3.0
1	B	25	THR	3.0
1	B	285	GLU	2.9
1	A	213	LEU	2.9
1	A	245	ALA	2.8
1	A	241	GLU	2.7
1	A	242	ALA	2.7
1	A	2	ASN	2.7
1	A	162	ASP	2.7
1	B	2	ASN	2.7
1	B	286	SER	2.6
1	A	161	ARG	2.6
1	B	138	THR	2.6
1	B	136	ARG	2.5
1	B	162	ASP	2.5
1	A	3	THR	2.5
1	B	79	ARG	2.5
1	A	285	GLU	2.4
1	A	256	CYS	2.4
1	A	249	LEU	2.4
1	A	254	VAL	2.4
1	B	181	GLN	2.4
1	A	261	THR	2.4
1	B	249	LEU	2.3
1	B	101	VAL	2.3
1	A	289	SER	2.3
1	B	86	SER	2.3
1	A	327	ARG	2.2
1	B	134	ILE	2.2
1	B	118	LEU	2.2
1	A	181	GLN	2.2
1	A	1	GLY	2.2
1	B	1	GLY	2.1
1	B	52	TYR	2.1
1	B	72	ASN	2.1
1	A	251	ASP	2.1
1	A	258	GLU	2.1
1	A	290	LYS	2.1
1	A	168	SER	2.1

Continued on next page...

Continued from previous page...

Mol	Chain	Res	Type	RSRZ
1	A	286	SER	2.1
1	B	48	CYS	2.0

6.2 Non-standard residues in protein, DNA, RNA chains [i](#)

There are no non-standard protein/DNA/RNA residues in this entry.

6.3 Carbohydrates [i](#)

There are no oligosaccharides in this entry.

6.4 Ligands [i](#)

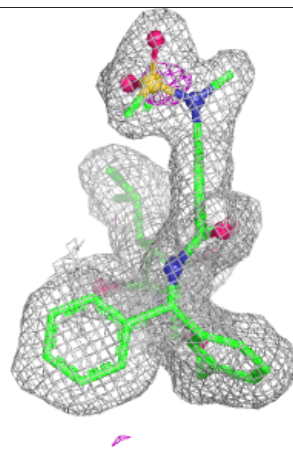
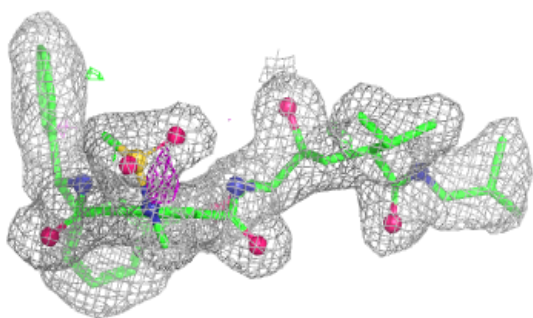
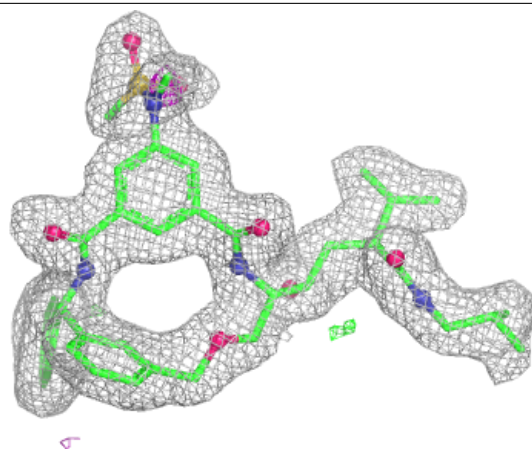
In the following table, the Atoms column lists the number of modelled atoms in the group and the number defined in the chemical component dictionary. The B-factors column lists the minimum, median, 95th percentile and maximum values of B factors of atoms in the group. The column labelled 'Q<0.9' lists the number of atoms with occupancy less than 0.9.

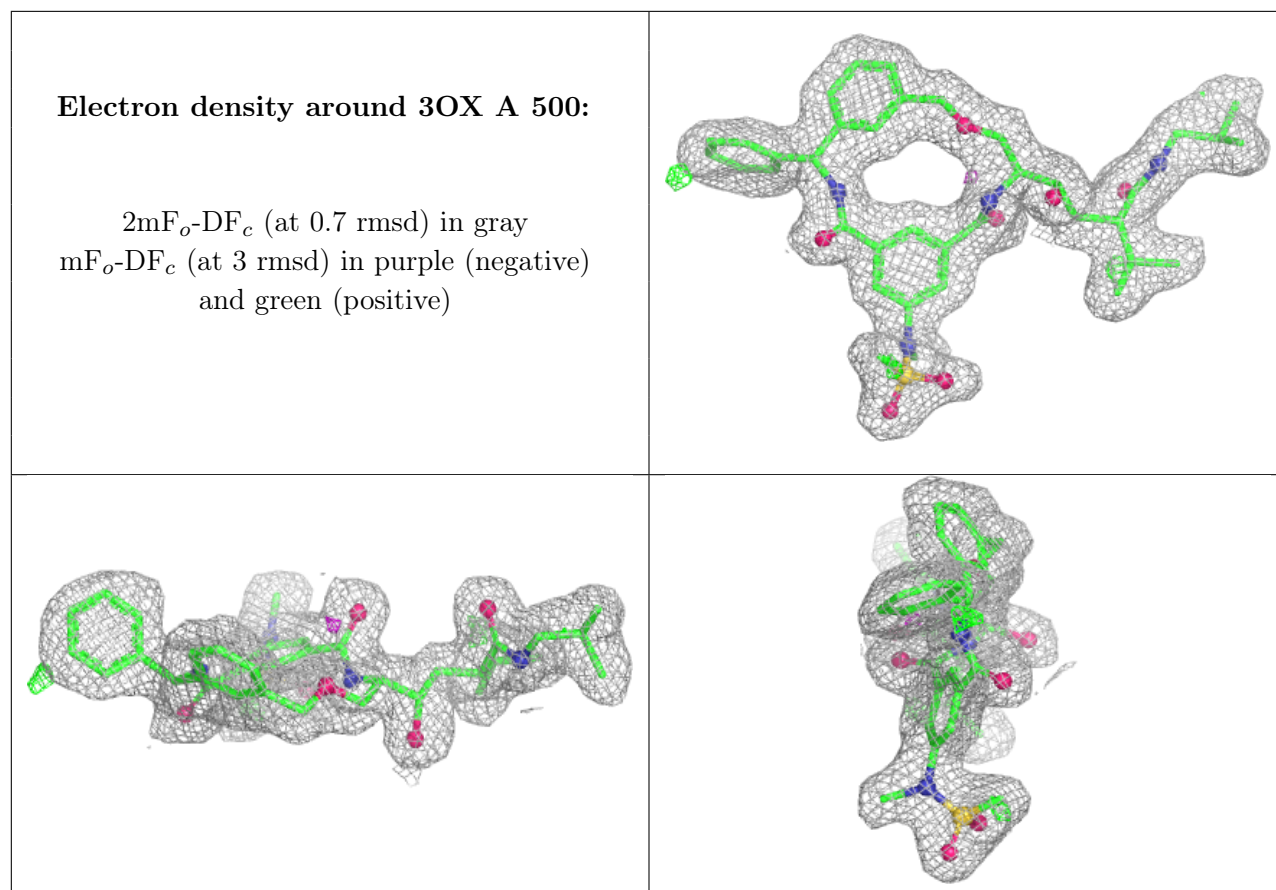
Mol	Type	Chain	Res	Atoms	RSCC	RSR	B-factors(Å ²)	Q<0.9
2	ACT	A	801	4/4	0.78	0.22	58,58,58,58	0
3	NA	A	803	1/1	0.78	0.50	34,34,34,34	1
2	ACT	A	804	4/4	0.84	0.21	58,58,58,59	0
3	NA	A	802	1/1	0.94	0.21	41,41,41,41	1
2	ACT	A	800	4/4	0.94	0.08	27,27,28,28	0
5	3OW	B	501	49/49	0.96	0.07	11,18,27,33	0
4	3OX	A	500	49/49	0.97	0.06	3,16,23,26	0

The following is a graphical depiction of the model fit to experimental electron density of all instances of the Ligand of Interest. In addition, ligands with molecular weight > 250 and outliers as shown on the geometry validation Tables will also be included. Each fit is shown from different orientation to approximate a three-dimensional view.

Electron density around 3OW B 501:

$2mF_o-DF_c$ (at 0.7 rmsd) in gray
 mF_o-DF_c (at 3 rmsd) in purple (negative)
and green (positive)





6.5 Other polymers [i](#)

There are no such residues in this entry.