



# Full wwPDB X-ray Structure Validation Report ⓘ

Mar 6, 2026 – 08:22 PM UTC

PDB ID : 1OOK / pdb\_00001ook  
Title : Crystal Structure of the Complex of Platelet Receptor GPIb-alpha and Human alpha-Thrombin  
Authors : Varughese, K.I.; Celikel, R.; Ruggeri, Z.M.  
Deposited on : 2003-03-03  
Resolution : 2.30 Å(reported)

This is a Full wwPDB X-ray Structure Validation Report for a publicly released PDB entry.

We welcome your comments at [validation@mail.wwpdb.org](mailto:validation@mail.wwpdb.org)

A user guide is available at

<https://www.wwpdb.org/validation/2017/XrayValidationReportHelp>

with specific help available everywhere you see the ⓘ symbol.

The types of validation reports are described at

<http://www.wwpdb.org/validation/2017/FAQs#types>.

---

The following versions of software and data (see [references ⓘ](#)) were used in the production of this report:

MolProbity : 4-5-2 with Phenix2.0  
Mogul : 2022.3.0, CSD as543be (2022)  
Xtrriage (Phenix) : 2.0  
EDS : 3.0  
Percentile statistics : 20250101.v01 (using entries in the PDB archive January 1st 2025)  
CCP4 : 9.0.010 (Gargrove)  
Density-Fitness : 1.0.12  
Ideal geometry (proteins) : Engh & Huber (2001)  
Ideal geometry (DNA, RNA) : Parkinson et al. (1996)  
Validation Pipeline (wwPDB-VP) : 2.49

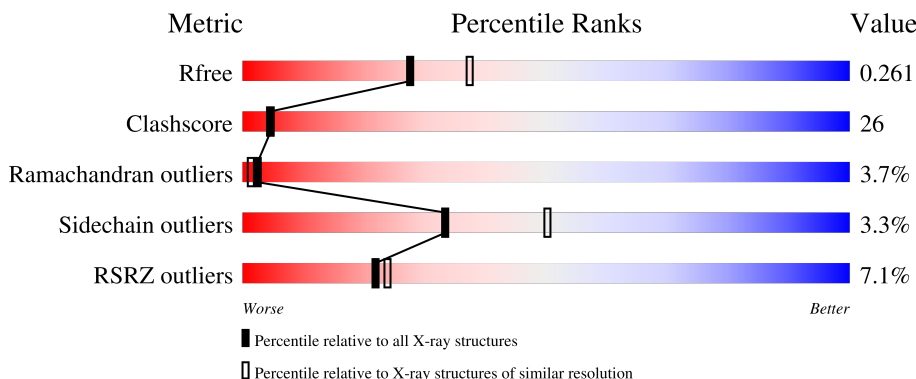
# 1 Overall quality at a glance

The following experimental techniques were used to determine the structure:

*X-RAY DIFFRACTION*

The reported resolution of this entry is 2.30 Å.

Percentile scores (ranging between 0-100) for global validation metrics of the entry are shown in the following graphic. The table shows the number of entries on which the scores are based.



Metric	Whole archive (#Entries)	Similar resolution (#Entries, resolution range(Å))
$R_{free}$	180053	6319 (2.30-2.30)
Clashscore	190562	6919 (2.30-2.30)
Ramachandran outliers	187476	6854 (2.30-2.30)
Sidechain outliers	187428	6854 (2.30-2.30)
RSRZ outliers	180081	6325 (2.30-2.30)

The table below summarises the geometric issues observed across the polymeric chains and their fit to the electron density. The red, orange, yellow and green segments of the lower bar indicate the fraction of residues that contain outliers for  $\geq 3$ , 2, 1 and 0 types of geometric quality criteria respectively. A grey segment represents the fraction of residues that are not modelled. The numeric value for each fraction is indicated below the corresponding segment, with a dot representing fractions  $\leq 5\%$ . The upper red bar (where present) indicates the fraction of residues that have poor fit to the electron density. The numeric value is given above the bar.

Mol	Chain	Length	Quality of chain
1	A	36	
2	B	259	
3	P	3	
4	G	290	
5	C	5	

## 2 Entry composition

There are 8 unique types of molecules in this entry. The entry contains 5111 atoms, of which 0 are hydrogens and 0 are deuteriums.

In the tables below, the ZeroOcc column contains the number of atoms modelled with zero occupancy, the AltConf column contains the number of residues with at least one atom in alternate conformation and the Trace column contains the number of residues modelled with at most 2 atoms.

- Molecule 1 is a protein called Human Alpha Thrombin.

Mol	Chain	Residues	Atoms					ZeroOcc	AltConf	Trace
			Total	C	N	O	S			
1	A	36	287	177	48	61	1	0	0	0

- Molecule 2 is a protein called Human Alpha Thrombin.

Mol	Chain	Residues	Atoms					ZeroOcc	AltConf	Trace
			Total	C	N	O	S			
2	B	259	2093	1334	370	375	14	0	0	0

- Molecule 3 is a protein called PHE-PRO-ARG-Chloromethylketone.

Mol	Chain	Residues	Atoms				ZeroOcc	AltConf	Trace
			Total	C	N	O			
3	P	3	30	20	6	4	0	0	0

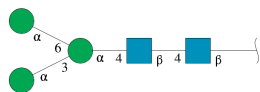
- Molecule 4 is a protein called Platelet glycoprotein Ib alpha chain precursor.

Mol	Chain	Residues	Atoms					ZeroOcc	AltConf	Trace
			Total	C	N	O	S			
4	G	284	2233	1427	363	433	10	0	0	0

There are 3 discrepancies between the modelled and reference sequences:

Chain	Residue	Modelled	Actual	Comment	Reference
G	65	ALA	CYS	engineered mutation	UNP P07359
G	276	TYS	TYR	modified residue	UNP P07359
G	279	TYS	TYR	modified residue	UNP P07359

- Molecule 5 is an oligosaccharide called alpha-D-mannopyranose-(1-3)-[alpha-D-mannopyranose-(1-6)]alpha-D-mannopyranose-(1-4)-2-acetamido-2-deoxy-beta-D-glucopyranose-(1-4)-2-acetamido-2-deoxy-beta-D-glucopyranose.

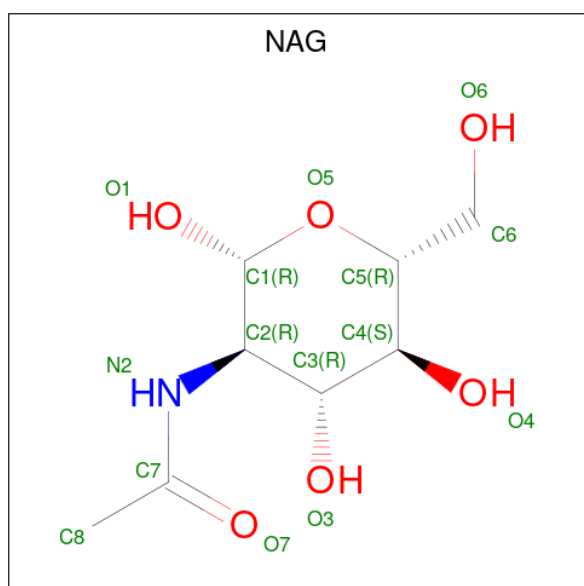


Mol	Chain	Residues	Atoms				ZeroOcc	AltConf	Trace
			Total	C	N	O			
5	C	5	61	34	2	25	0	0	0

- Molecule 6 is CHLORIDE ION (CCD ID: CL) (formula: Cl).

Mol	Chain	Residues	Atoms		ZeroOcc	AltConf
			Total	Cl		
6	B	1	1	1	0	0

- Molecule 7 is 2-acetamido-2-deoxy-beta-D-glucopyranose (CCD ID: NAG) (formula: C<sub>8</sub>H<sub>15</sub>NO<sub>6</sub>).



Mol	Chain	Residues	Atoms				ZeroOcc	AltConf
			Total	C	N	O		
7	G	1	14	8	1	5	0	0

- Molecule 8 is water.

Mol	Chain	Residues	Atoms		ZeroOcc	AltConf
			Total	O		
8	A	33	33	33	0	0
8	B	239	239	239	0	0

*Continued on next page...*

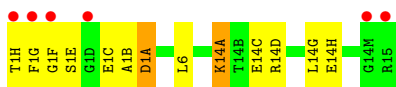
*Continued from previous page...*

<b>Mol</b>	<b>Chain</b>	<b>Residues</b>	<b>Atoms</b>	<b>ZeroOcc</b>	<b>AltConf</b>
8	P	1	Total O 1 1	0	0
8	G	119	Total O 119 119	0	0

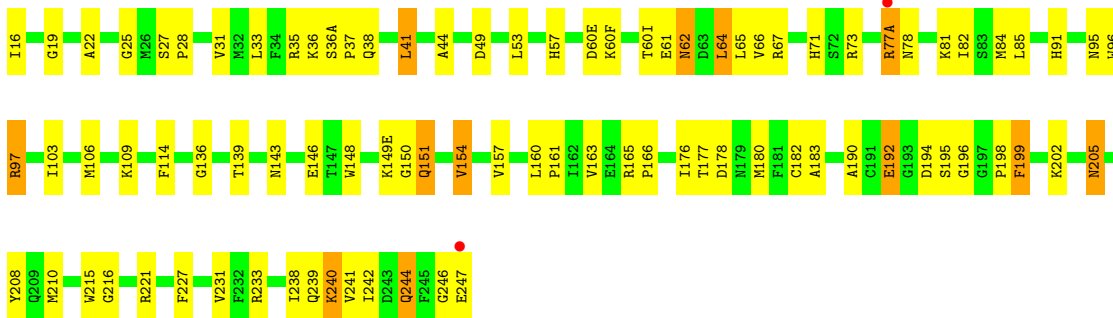
### 3 Residue-property plots

These plots are drawn for all protein, RNA, DNA and oligosaccharide chains in the entry. The first graphic for a chain summarises the proportions of the various outlier classes displayed in the second graphic. The second graphic shows the sequence view annotated by issues in geometry and electron density. Residues are color-coded according to the number of geometric quality criteria for which they contain at least one outlier: green = 0, yellow = 1, orange = 2 and red = 3 or more. A red dot above a residue indicates a poor fit to the electron density ( $RSRZ > 2$ ). Stretches of 2 or more consecutive residues without any outlier are shown as a green connector. Residues present in the sample, but not in the model, are shown in grey.

- Molecule 1: Human Alpha Thrombin



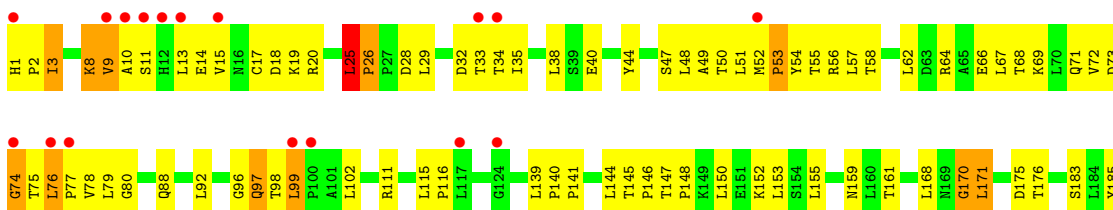
- Molecule 2: Human Alpha Thrombin

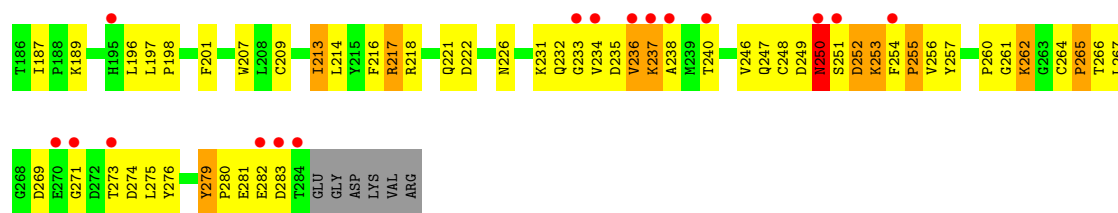


- Molecule 3: PHE-PRO-ARG-Chloromethylketone



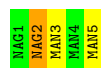
- Molecule 4: Platelet glycoprotein Ib alpha chain precursor





- Molecule 5:  $\alpha$ -D-mannopyranose-(1-3)-[ $\alpha$ -D-mannopyranose-(1-6)] $\alpha$ -D-mannopyranose-(1-4)-2-acetamido-2-deoxy- $\beta$ -D-glucopyranose-(1-4)-2-acetamido-2-deoxy- $\beta$ -D-glucopyranose

Chain C: 40% 40% 20%



## 4 Data and refinement statistics

Property	Value	Source
Space group	P 43 21 2	Depositor
Cell constants a, b, c, $\alpha$ , $\beta$ , $\gamma$	67.65Å 67.65Å 328.58Å 90.00° 90.00° 90.00°	Depositor
Resolution (Å)	15.00 – 2.30 15.00 – 2.30	Depositor EDS
% Data completeness (in resolution range)	98.2 (15.00-2.30) 97.9 (15.00-2.30)	Depositor EDS
$R_{merge}$	(Not available)	Depositor
$R_{sym}$	0.07	Depositor
$\langle I/\sigma(I) \rangle$ <sup>1</sup>	3.66 (at 2.29Å)	Xtrriage
Refinement program	CNS	Depositor
R, $R_{free}$	0.212 , 0.260 0.215 , 0.261	Depositor DCC
$R_{free}$ test set	1722 reflections (4.88%)	wwPDB-VP
Wilson B-factor (Å <sup>2</sup> )	37.7	Xtrriage
Anisotropy	0.023	Xtrriage
Bulk solvent $k_{sol}$ (e/Å <sup>3</sup> ), $B_{sol}$ (Å <sup>2</sup> )	0.33 , 64.0	EDS
L-test for twinning <sup>2</sup>	$\langle  L  \rangle = 0.48$ , $\langle L^2 \rangle = 0.32$	Xtrriage
Estimated twinning fraction	No twinning to report.	Xtrriage
$F_o, F_c$ correlation	0.94	EDS
Total number of atoms	5111	wwPDB-VP
Average B, all atoms (Å <sup>2</sup> )	48.0	wwPDB-VP

Xtrriage's analysis on translational NCS is as follows: *The largest off-origin peak in the Patterson function is 3.89% of the height of the origin peak. No significant pseudotranslation is detected.*

<sup>1</sup>Intensities estimated from amplitudes.

<sup>2</sup>Theoretical values of  $\langle |L| \rangle$ ,  $\langle L^2 \rangle$  for acentric reflections are 0.5, 0.333 respectively for untwinned datasets, and 0.375, 0.2 for perfectly twinned datasets.

## 5 Model quality [i](#)

### 5.1 Standard geometry [i](#)

Bond lengths and bond angles in the following residue types are not validated in this section: CL, NAG, TYS, MAN

The Z score for a bond length (or angle) is the number of standard deviations the observed value is removed from the expected value. A bond length (or angle) with  $|Z| > 5$  is considered an outlier worth inspection. RMSZ is the root-mean-square of all Z scores of the bond lengths (or angles).

Mol	Chain	Bond lengths		Bond angles	
		RMSZ	# $ Z  > 5$	RMSZ	# $ Z  > 5$
1	A	0.38	0/290	0.88	2/384 (0.5%)
2	B	0.43	0/2148	0.98	14/2903 (0.5%)
3	P	0.59	0/31	1.04	0/39
4	G	0.35	0/2248	0.91	11/3068 (0.4%)
All	All	0.39	0/4717	0.94	27/6394 (0.4%)

There are no bond length outliers.

All (27) bond angle outliers are listed below:

Mol	Chain	Res	Type	Atoms	Z	Observed(°)	Ideal(°)
4	G	213	ILE	N-CA-C	-8.88	104.26	112.43
2	B	190	ALA	N-CA-C	-6.77	101.01	110.35
4	G	250	ASN	N-CA-C	-6.60	104.38	113.56
2	B	91	HIS	CA-C-N	6.32	126.00	119.56
2	B	91	HIS	C-N-CA	6.32	126.00	119.56
1	A	14(A)	LYS	N-CA-C	6.01	119.71	112.38
4	G	197	LEU	CA-C-N	5.86	125.55	119.05
4	G	197	LEU	C-N-CA	5.86	125.55	119.05
2	B	97	ARG	N-CA-C	5.70	118.26	111.71
2	B	244	GLN	N-CA-C	5.70	117.17	111.07
1	A	1(A)	ASP	N-CA-C	-5.57	106.37	114.12
2	B	196	GLY	N-CA-C	-5.52	106.88	114.67
2	B	143	ASN	N-CA-C	5.43	118.10	110.23
4	G	25	LEU	CA-C-N	5.37	125.92	120.38
4	G	25	LEU	C-N-CA	5.37	125.92	120.38
2	B	231	VAL	N-CA-C	5.36	115.57	110.42
2	B	199	PHE	N-CA-C	-5.31	98.60	107.99
4	G	170	GLY	N-CA-C	-5.19	106.90	111.67
2	B	19	GLY	N-CA-C	-5.14	106.62	112.79
4	G	76	LEU	CA-C-N	5.14	126.27	119.84

*Continued on next page...*

Continued from previous page...

Mol	Chain	Res	Type	Atoms	Z	Observed(°)	Ideal(°)
4	G	76	LEU	C-N-CA	5.14	126.27	119.84
2	B	64	LEU	N-CA-C	5.12	117.46	109.52
2	B	27	SER	CA-C-N	5.09	126.20	119.84
2	B	27	SER	C-N-CA	5.09	126.20	119.84
4	G	99	LEU	CA-C-N	5.06	124.55	119.19
4	G	99	LEU	C-N-CA	5.06	124.55	119.19
2	B	65	LEU	N-CA-C	-5.01	101.75	109.52

There are no chirality outliers.

There are no planarity outliers.

## 5.2 Too-close contacts [i](#)

In the following table, the Non-H and H(model) columns list the number of non-hydrogen atoms and hydrogen atoms in the chain respectively. The H(added) column lists the number of hydrogen atoms added and optimized by MolProbity. The Clashes column lists the number of clashes within the asymmetric unit, whereas Symm-Clashes lists symmetry-related clashes.

Mol	Chain	Non-H	H(model)	H(added)	Clashes	Symm-Clashes
1	A	287	0	278	14	0
2	B	2093	0	2063	83	0
3	P	30	0	31	14	0
4	G	2233	0	2224	155	0
5	C	61	0	52	1	0
6	B	1	0	0	1	0
7	G	14	0	13	0	0
8	A	33	0	0	3	0
8	B	239	0	0	11	0
8	G	119	0	0	4	0
8	P	1	0	0	2	0
All	All	5111	0	4661	244	0

The all-atom clashscore is defined as the number of clashes found per 1000 atoms (including hydrogen atoms). The all-atom clashscore for this structure is 26.

All (244) close contacts within the same asymmetric unit are listed below, sorted by their clash magnitude.

Atom-1	Atom-2	Interatomic distance (Å)	Clash overlap (Å)
4:G:25:LEU:HD23	4:G:25:LEU:H	1.13	1.11
2:B:149(E):LYS:HG3	4:G:283:ASP:HB3	1.47	0.95

Continued on next page...

*Continued from previous page...*

Atom-1	Atom-2	Interatomic distance (Å)	Clash overlap (Å)
4:G:49:ALA:HB2	4:G:73:ASP:HB2	1.47	0.95
3:P:1:PHE:HB3	3:P:2:PRO:HD3	1.52	0.92
4:G:273:THR:HG22	4:G:274:ASP:H	1.35	0.92
4:G:58:THR:HG22	4:G:78:VAL:HG12	1.54	0.89
2:B:165:ARG:HH11	2:B:165:ARG:HB3	1.35	0.88
4:G:17:CYS:HA	4:G:20:ARG:HE	1.38	0.88
2:B:165:ARG:HB3	2:B:165:ARG:NH1	1.89	0.86
2:B:57:HIS:NE2	3:P:3:ARG:OXT	2.09	0.85
6:B:400:CL:CL	8:P:299:HOH:O	2.34	0.82
4:G:14:GLU:HG3	4:G:35:ILE:HB	1.62	0.81
4:G:267:LEU:HD23	4:G:267:LEU:H	1.43	0.80
4:G:68:THR:HG22	4:G:88:GLN:HB2	1.62	0.79
2:B:202:LYS:HE2	2:B:205:ASN:ND2	1.99	0.78
1:A:1(H):THR:HA	8:B:587:HOH:O	1.83	0.78
2:B:150:GLY:H	4:G:281:GLU:HG3	1.49	0.77
1:A:1(F):GLY:HA2	8:A:48:HOH:O	1.84	0.76
4:G:25:LEU:HD11	4:G:50:THR:HG22	1.67	0.75
4:G:25:LEU:HD23	4:G:25:LEU:N	1.98	0.75
4:G:48:LEU:HD12	4:G:72:VAL:HA	1.67	0.75
2:B:195:SER:OG	3:P:3:ARG:C	2.31	0.74
4:G:25:LEU:H	4:G:25:LEU:CD2	1.93	0.73
3:P:1:PHE:CB	3:P:2:PRO:HD3	2.19	0.72
4:G:97:GLN:H	4:G:97:GLN:NE2	1.90	0.70
4:G:52:MET:HB3	4:G:53:PRO:HD3	1.74	0.70
4:G:214:LEU:O	4:G:217:ARG:HB3	1.93	0.69
2:B:67:ARG:CZ	8:B:531:HOH:O	2.41	0.69
4:G:145:THR:HB	4:G:146:PRO:HD3	1.75	0.69
4:G:218:ARG:HD2	4:G:271:GLY:H	1.58	0.69
4:G:25:LEU:HD21	4:G:50:THR:HG21	1.76	0.68
4:G:13:LEU:HB2	4:G:33:THR:HA	1.75	0.68
4:G:3:ILE:N	4:G:3:ILE:HD12	2.09	0.68
4:G:1:HIS:HB3	4:G:2:PRO:HD3	1.76	0.67
4:G:97:GLN:H	4:G:97:GLN:CD	2.03	0.66
2:B:150:GLY:N	4:G:281:GLU:HG3	2.11	0.66
1:A:1(C):GLU:H	1:A:1(C):GLU:CD	2.02	0.66
1:A:1(C):GLU:C	1:A:1(A):ASP:H	2.03	0.66
2:B:35:ARG:HB2	2:B:41:LEU:HD22	1.76	0.66
2:B:139:THR:HG22	2:B:157:VAL:HG22	1.78	0.66
2:B:77(A):ARG:HG3	2:B:78:ASN:N	2.11	0.65
1:A:1(E):SER:HB2	2:B:49:ASP:OD1	1.96	0.65
4:G:273:THR:HG22	4:G:274:ASP:N	2.07	0.65

*Continued on next page...*

*Continued from previous page...*

Atom-1	Atom-2	Interatomic distance (Å)	Clash overlap (Å)
2:B:216:GLY:O	3:P:1:PHE:HA	1.96	0.65
1:A:14(D):ARG:O	1:A:14(H):GLU:HG3	1.97	0.64
2:B:148:TRP:HA	4:G:279:TYS:O2	1.98	0.64
2:B:60(E):ASP:HB3	8:B:705:HOH:O	1.98	0.63
4:G:146:PRO:C	4:G:148:PRO:HD3	2.23	0.63
4:G:175:ASP:HA	4:G:198:PRO:HD2	1.80	0.62
2:B:151:GLN:HG2	4:G:282:GLU:HG3	1.81	0.62
2:B:146:GLU:OE2	2:B:221:ARG:HD2	1.99	0.62
2:B:60(I):THR:HG22	2:B:61:GLU:N	2.13	0.61
2:B:77(A):ARG:HG3	2:B:78:ASN:H	1.64	0.61
4:G:253:LYS:C	4:G:255:PRO:HD3	2.25	0.61
2:B:22:ALA:HB2	2:B:157:VAL:HG23	1.83	0.60
2:B:208:TYR:HB2	2:B:210:MET:HE1	1.82	0.60
1:A:14(C):GLU:O	1:A:14(G):LEU:HD23	2.01	0.60
4:G:267:LEU:H	4:G:267:LEU:CD2	2.13	0.60
2:B:151:GLN:HG2	4:G:282:GLU:CG	2.32	0.59
4:G:139:LEU:HD11	4:G:155:LEU:HD13	1.83	0.59
3:P:1:PHE:HB3	3:P:2:PRO:CD	2.30	0.58
4:G:19:LYS:HE3	4:G:40:GLU:OE1	2.03	0.58
4:G:17:CYS:HA	4:G:20:ARG:NE	2.13	0.58
2:B:73:ARG:NH1	4:G:282:GLU:OE2	2.36	0.58
4:G:17:CYS:HB2	4:G:38:LEU:HD23	1.86	0.57
4:G:251:SER:O	4:G:252:ASP:C	2.48	0.57
4:G:75:THR:HG22	4:G:77:PRO:HD3	1.87	0.57
2:B:22:ALA:HB2	2:B:157:VAL:CG2	2.34	0.57
4:G:13:LEU:HB2	4:G:32:ASP:O	2.04	0.57
4:G:80:GLY:O	4:G:102:LEU:HD12	2.06	0.56
2:B:31:VAL:CG1	2:B:66:VAL:HG13	2.35	0.56
2:B:178:ASP:O	2:B:233:ARG:HD3	2.05	0.56
4:G:25:LEU:HD11	4:G:50:THR:CG2	2.33	0.56
4:G:40:GLU:HA	4:G:64:ARG:O	2.06	0.56
2:B:62:ASN:HB2	8:B:641:HOH:O	2.05	0.55
2:B:37:PRO:HD3	4:G:273:THR:HG21	1.88	0.55
2:B:192:GLU:HG3	8:B:650:HOH:O	2.05	0.55
2:B:81:LYS:HD3	2:B:82:ILE:N	2.21	0.55
2:B:67:ARG:NE	8:B:531:HOH:O	2.40	0.55
2:B:238:ILE:O	2:B:242:ILE:HG12	2.07	0.55
4:G:150:LEU:HB3	4:G:171:LEU:HD12	1.89	0.55
4:G:267:LEU:HD23	4:G:267:LEU:N	2.20	0.55
4:G:15:VAL:HG11	4:G:29:LEU:HD13	1.89	0.54
4:G:9:VAL:C	4:G:11:SER:H	2.16	0.54

*Continued on next page...*

*Continued from previous page...*

Atom-1	Atom-2	Interatomic distance (Å)	Clash overlap (Å)
4:G:252:ASP:O	4:G:254:PHE:N	2.41	0.54
4:G:14:GLU:HG3	4:G:35:ILE:CB	2.35	0.53
4:G:74:GLY:O	4:G:98:THR:HG23	2.09	0.53
4:G:232:GLN:HG3	4:G:235:ASP:OD1	2.08	0.53
4:G:75:THR:O	4:G:76:LEU:HD23	2.08	0.53
4:G:141:PRO:HA	8:G:645:HOH:O	2.08	0.53
4:G:237:LYS:HE2	4:G:237:LYS:HA	1.90	0.53
2:B:33:LEU:HD21	2:B:106:MET:HE1	1.91	0.53
2:B:165:ARG:HB2	2:B:166:PRO:HD3	1.91	0.53
4:G:8:LYS:HB3	4:G:13:LEU:HD13	1.91	0.53
4:G:47:SER:HA	4:G:71:GLN:HB2	1.91	0.53
1:A:14(A):LYS:HB2	8:B:624:HOH:O	2.08	0.52
4:G:79:LEU:HD23	4:G:99:LEU:HD13	1.92	0.52
4:G:10:ALA:O	4:G:11:SER:HB3	2.10	0.52
2:B:95:ASN:CG	8:B:589:HOH:O	2.51	0.52
4:G:53:PRO:HB2	4:G:54:TYR:CD1	2.44	0.52
1:A:1(C):GLU:O	1:A:1(B):ALA:HB3	2.10	0.52
4:G:34:THR:O	4:G:57:LEU:HD12	2.10	0.52
4:G:170:GLY:O	4:G:171:LEU:C	2.53	0.51
2:B:77(A):ARG:CG	2:B:78:ASN:N	2.72	0.51
4:G:248:CYS:O	4:G:251:SER:N	2.37	0.51
2:B:246:GLY:O	2:B:247:GLU:HB3	2.09	0.51
4:G:20:ARG:HG2	4:G:20:ARG:HH11	1.75	0.51
3:P:1:PHE:CB	3:P:2:PRO:CD	2.87	0.51
2:B:239:GLN:HG2	8:B:544:HOH:O	2.10	0.51
4:G:209:CYS:HA	4:G:213:ILE:HG21	1.92	0.51
2:B:246:GLY:O	2:B:247:GLU:CB	2.58	0.51
4:G:249:ASP:C	4:G:251:SER:N	2.69	0.51
4:G:67:LEU:HD23	4:G:68:THR:N	2.25	0.51
4:G:88:GLN:OE1	4:G:111:ARG:HD2	2.11	0.51
4:G:273:THR:CG2	4:G:274:ASP:H	2.10	0.51
4:G:161:THR:HA	4:G:183:SER:O	2.09	0.50
2:B:77(A):ARG:HG3	2:B:78:ASN:ND2	2.26	0.50
2:B:151:GLN:CG	4:G:282:GLU:HG3	2.41	0.50
2:B:53:LEU:HD11	2:B:103:ILE:HD11	1.94	0.50
4:G:236:VAL:O	4:G:238:ALA:N	2.37	0.50
2:B:195:SER:CB	3:P:3:ARG:O	2.60	0.49
2:B:33:LEU:HD22	2:B:64:LEU:HD13	1.94	0.49
4:G:171:LEU:HD22	4:G:171:LEU:N	2.27	0.49
4:G:8:LYS:O	4:G:9:VAL:HB	2.13	0.49
4:G:53:PRO:O	4:G:54:TYR:C	2.56	0.49

*Continued on next page...*

*Continued from previous page...*

Atom-1	Atom-2	Interatomic distance (Å)	Clash overlap (Å)
4:G:249:ASP:C	4:G:251:SER:H	2.19	0.49
4:G:97:GLN:NE2	4:G:97:GLN:N	2.60	0.49
4:G:251:SER:OG	4:G:254:PHE:HB2	2.13	0.49
4:G:147:THR:N	4:G:148:PRO:HD3	2.28	0.49
2:B:31:VAL:HB	2:B:44:ALA:HB3	1.95	0.48
2:B:85:LEU:CD1	2:B:106:MET:HE2	2.42	0.48
4:G:34:THR:HA	4:G:56:ARG:O	2.13	0.48
2:B:60(I):THR:CG2	2:B:61:GLU:N	2.76	0.48
4:G:13:LEU:CB	4:G:33:THR:HA	2.43	0.48
3:P:1:PHE:CG	3:P:2:PRO:HD3	2.47	0.48
4:G:49:ALA:HB2	4:G:73:ASP:CB	2.31	0.48
4:G:273:THR:O	4:G:274:ASP:HB3	2.13	0.48
2:B:195:SER:HB2	3:P:3:ARG:O	2.14	0.48
4:G:218:ARG:O	4:G:221:GLN:HB2	2.13	0.48
4:G:254:PHE:N	4:G:254:PHE:CD1	2.82	0.48
4:G:29:LEU:HB2	4:G:54:TYR:HE2	1.79	0.48
4:G:58:THR:HA	4:G:79:LEU:HA	1.96	0.48
4:G:254:PHE:O	4:G:255:PRO:C	2.56	0.47
4:G:67:LEU:HD23	4:G:69:LYS:N	2.28	0.47
4:G:78:VAL:HG12	4:G:78:VAL:O	2.14	0.47
2:B:163:VAL:HG23	2:B:183:ALA:HA	1.96	0.47
4:G:247:GLN:NE2	4:G:252:ASP:O	2.48	0.47
3:P:3:ARG:C	8:P:299:HOH:O	2.56	0.47
4:G:260:PRO:C	4:G:262:LYS:H	2.23	0.47
2:B:136:GLY:HA3	2:B:199:PHE:CZ	2.49	0.47
2:B:150:GLY:CA	4:G:281:GLU:HG3	2.45	0.47
2:B:165:ARG:HH11	2:B:165:ARG:CB	2.17	0.47
4:G:51:LEU:O	4:G:52:MET:C	2.57	0.47
4:G:171:LEU:HD22	4:G:171:LEU:H	1.79	0.47
4:G:9:VAL:C	4:G:11:SER:N	2.72	0.46
4:G:75:THR:HG22	4:G:77:PRO:CD	2.45	0.46
1:A:1(C):GLU:C	1:A:1(A):ASP:N	2.71	0.46
2:B:150:GLY:HA3	4:G:281:GLU:HG3	1.98	0.46
4:G:217:ARG:HE	4:G:257:TYR:HA	1.80	0.46
2:B:77(A):ARG:NH1	4:G:175:ASP:OD2	2.48	0.46
4:G:144:LEU:HD11	4:G:153:LEU:HD22	1.97	0.46
4:G:249:ASP:OD1	4:G:249:ASP:O	2.34	0.46
2:B:60(I):THR:HG22	2:B:61:GLU:H	1.81	0.45
1:A:1(G):PHE:HB2	8:A:382:HOH:O	2.17	0.45
4:G:279:TYS:N	4:G:280:PRO:HD3	2.30	0.45
1:A:6:LEU:HD12	2:B:25:GLY:HA3	1.98	0.45

*Continued on next page...*

*Continued from previous page...*

Atom-1	Atom-2	Interatomic distance (Å)	Clash overlap (Å)
2:B:41:LEU:HD23	2:B:41:LEU:N	2.31	0.45
2:B:71:HIS:CD2	2:B:154:VAL:HG22	2.51	0.45
4:G:233:GLY:C	4:G:235:ASP:H	2.24	0.45
4:G:68:THR:HG22	4:G:88:GLN:CB	2.42	0.45
4:G:159:ASN:HB3	8:G:658:HOH:O	2.17	0.45
4:G:217:ARG:HD2	4:G:256:VAL:O	2.17	0.45
2:B:85:LEU:HD13	2:B:106:MET:HE2	1.98	0.45
2:B:176:ILE:HG22	2:B:177:THR:N	2.32	0.45
4:G:67:LEU:HD21	4:G:69:LYS:C	2.42	0.44
2:B:31:VAL:HG13	2:B:66:VAL:HG13	1.98	0.44
4:G:44:TYR:HE2	4:G:66:GLU:OE2	2.01	0.44
4:G:49:ALA:CB	4:G:73:ASP:HB2	2.34	0.44
4:G:248:CYS:O	4:G:251:SER:OG	2.26	0.44
1:A:1(C):GLU:HB2	8:A:348:HOH:O	2.18	0.44
4:G:25:LEU:HD21	4:G:50:THR:CG2	2.47	0.44
2:B:114:PHE:HB3	8:B:592:HOH:O	2.16	0.44
4:G:261:GLY:O	4:G:262:LYS:C	2.59	0.44
2:B:41:LEU:HD23	2:B:41:LEU:H	1.83	0.44
4:G:140:PRO:HA	4:G:141:PRO:HD3	1.86	0.43
5:C:2:NAG:O3	5:C:3:MAN:C1	2.66	0.43
4:G:38:LEU:HB2	4:G:62:LEU:HD23	1.99	0.43
4:G:3:ILE:N	4:G:3:ILE:CD1	2.79	0.43
4:G:54:TYR:CD1	4:G:54:TYR:N	2.86	0.43
4:G:236:VAL:C	4:G:238:ALA:H	2.25	0.43
2:B:36(A):SER:HA	2:B:37:PRO:HA	1.91	0.43
4:G:201:PHE:CZ	4:G:237:LYS:HG3	2.54	0.43
2:B:84:MET:HE3	2:B:109:LYS:HD2	2.01	0.43
2:B:163:VAL:HB	2:B:182:CYS:SG	2.59	0.43
4:G:214:LEU:HA	4:G:217:ARG:HB3	1.99	0.43
4:G:250:ASN:HD22	4:G:250:ASN:HA	1.61	0.43
4:G:76:LEU:N	4:G:77:PRO:HD3	2.34	0.43
2:B:16:ILE:N	2:B:194:ASP:OD2	2.52	0.42
4:G:25:LEU:HA	4:G:26:PRO:HD3	1.86	0.42
4:G:152:LYS:HG2	4:G:176:THR:HB	2.01	0.42
4:G:218:ARG:HA	4:G:221:GLN:OE1	2.19	0.42
4:G:231:LYS:HB2	4:G:237:LYS:NZ	2.34	0.42
1:A:1(F):GLY:O	1:A:1(E):SER:HB2	2.19	0.42
2:B:240:LYS:O	2:B:244:GLN:HB2	2.19	0.42
4:G:10:ALA:O	4:G:11:SER:CB	2.66	0.42
2:B:67:ARG:NH2	8:B:531:HOH:O	2.51	0.42
4:G:252:ASP:C	4:G:254:PHE:H	2.27	0.42

*Continued on next page...*

Continued from previous page...

Atom-1	Atom-2	Interatomic distance (Å)	Clash overlap (Å)
4:G:262:LYS:HB2	8:G:694:HOH:O	2.20	0.42
4:G:246:VAL:HG12	4:G:256:VAL:CG2	2.49	0.42
2:B:57:HIS:O	2:B:60(F):LYS:HE3	2.19	0.42
4:G:222:ASP:HA	8:G:633:HOH:O	2.20	0.42
4:G:49:ALA:HB2	4:G:74:GLY:H	1.84	0.42
4:G:73:ASP:O	4:G:74:GLY:O	2.37	0.42
4:G:64:ARG:HG3	4:G:64:ARG:HH11	1.84	0.42
4:G:187:ILE:HB	4:G:216:PHE:HB2	2.01	0.42
2:B:195:SER:CB	3:P:3:ARG:C	2.92	0.42
4:G:201:PHE:CD1	4:G:201:PHE:N	2.87	0.42
2:B:67:ARG:NH1	4:G:196:LEU:HD23	2.35	0.41
4:G:75:THR:C	4:G:77:PRO:HD3	2.45	0.41
2:B:35:ARG:O	2:B:38:GLN:HA	2.19	0.41
4:G:9:VAL:O	4:G:10:ALA:HB3	2.20	0.41
4:G:281:GLU:HG3	4:G:281:GLU:O	2.20	0.41
4:G:254:PHE:N	4:G:255:PRO:HD3	2.34	0.41
2:B:216:GLY:O	3:P:1:PHE:CA	2.67	0.41
4:G:18:ASP:O	4:G:20:ARG:HG3	2.20	0.41
4:G:14:GLU:HG3	4:G:35:ILE:CG2	2.51	0.41
2:B:25:GLY:O	2:B:28:PRO:HD3	2.20	0.41
2:B:160:LEU:HA	2:B:161:PRO:HD3	1.84	0.41
4:G:47:SER:HB2	4:G:71:GLN:NE2	2.35	0.41
4:G:273:THR:HA	4:G:275:LEU:HD13	2.02	0.41
2:B:96:TRP:CZ3	2:B:97:ARG:HG3	2.56	0.41
4:G:264:CYS:HA	4:G:265:PRO:HD3	1.94	0.41
4:G:218:ARG:HB3	4:G:271:GLY:CA	2.51	0.41
4:G:248:CYS:C	4:G:250:ASN:N	2.78	0.41
4:G:8:LYS:HB3	4:G:13:LEU:CD1	2.50	0.40
2:B:36:LYS:HZ2	2:B:62:ASN:HD22	1.69	0.40
4:G:92:LEU:HD22	4:G:115:LEU:HD22	2.04	0.40
4:G:168:LEU:C	4:G:171:LEU:HD23	2.47	0.40
4:G:185:TYR:HA	4:G:207:TRP:HA	2.02	0.40
2:B:148:TRP:CD1	2:B:148:TRP:H	2.40	0.40
2:B:38:GLN:HE22	4:G:226:ASN:HD21	1.69	0.40
2:B:176:ILE:HD12	2:B:227:PHE:CE2	2.56	0.40
2:B:215:TRP:HB2	3:P:1:PHE:O	2.21	0.40
4:G:261:GLY:O	4:G:264:CYS:SG	2.80	0.40

There are no symmetry-related clashes.

## 5.3 Torsion angles [i](#)

### 5.3.1 Protein backbone [i](#)

In the following table, the Percentiles column shows the percent Ramachandran outliers of the chain as a percentile score with respect to all X-ray entries followed by that with respect to entries of similar resolution.

The Analysed column shows the number of residues for which the backbone conformation was analysed, and the total number of residues.

Mol	Chain	Analysed	Favoured	Allowed	Outliers	Percentiles	
1	A	34/36 (94%)	27 (79%)	7 (21%)	0	100	100
2	B	257/259 (99%)	246 (96%)	10 (4%)	1 (0%)	30	38
3	P	1/3 (33%)	1 (100%)	0	0	100	100
4	G	280/290 (97%)	220 (79%)	40 (14%)	20 (7%)	1	0
All	All	572/588 (97%)	494 (86%)	57 (10%)	21 (4%)	2	1

All (21) Ramachandran outliers are listed below:

Mol	Chain	Res	Type
2	B	77(A)	ARG
4	G	9	VAL
4	G	28	ASP
4	G	189	LYS
4	G	234	VAL
4	G	240	THR
4	G	252	ASP
4	G	253	LYS
4	G	266	THR
4	G	74	GLY
4	G	237	LYS
4	G	262	LYS
4	G	53	PRO
4	G	55	THR
4	G	171	LEU
4	G	265	PRO
4	G	236	VAL
4	G	269	ASP
4	G	96	GLY
4	G	116	PRO
4	G	26	PRO

### 5.3.2 Protein sidechains [i](#)

In the following table, the Percentiles column shows the percent sidechain outliers of the chain as a percentile score with respect to all X-ray entries followed by that with respect to entries of similar resolution.

The Analysed column shows the number of residues for which the sidechain conformation was analysed, and the total number of residues.

Mol	Chain	Analysed	Rotameric	Outliers	Percentiles	
1	A	31/31 (100%)	31 (100%)	0	100	100
2	B	225/225 (100%)	215 (96%)	10 (4%)	25	38
3	P	3/3 (100%)	3 (100%)	0	100	100
4	G	252/257 (98%)	245 (97%)	7 (3%)	38	56
All	All	511/516 (99%)	494 (97%)	17 (3%)	33	50

All (17) residues with a non-rotameric sidechain are listed below:

Mol	Chain	Res	Type
2	B	41	LEU
2	B	62	ASN
2	B	151	GLN
2	B	154	VAL
2	B	180	MET
2	B	192	GLU
2	B	198	PRO
2	B	205	ASN
2	B	240	LYS
2	B	241	VAL
4	G	3	ILE
4	G	8	LYS
4	G	25	LEU
4	G	97	GLN
4	G	217	ARG
4	G	250	ASN
4	G	255	PRO

Sometimes sidechains can be flipped to improve hydrogen bonding and reduce clashes. All (11) such sidechains are listed below:

Mol	Chain	Res	Type
2	B	62	ASN
2	B	78	ASN

*Continued on next page...*

Continued from previous page...

Mol	Chain	Res	Type
2	B	205	ASN
4	G	12	HIS
4	G	61	ASN
4	G	71	GLN
4	G	97	GLN
4	G	169	ASN
4	G	226	ASN
4	G	247	GLN
4	G	250	ASN

### 5.3.3 RNA [i](#)

There are no RNA molecules in this entry.

## 5.4 Non-standard residues in protein, DNA, RNA chains [i](#)

2 non-standard protein/DNA/RNA residues are modelled in this entry.

In the following table, the Counts columns list the number of bonds (or angles) for which Mogul statistics could be retrieved, the number of bonds (or angles) that are observed in the model and the number of bonds (or angles) that are defined in the Chemical Component Dictionary. The Link column lists molecule types, if any, to which the group is linked. The Z score for a bond length (or angle) is the number of standard deviations the observed value is removed from the expected value. A bond length (or angle) with  $|Z| > 2$  is considered an outlier worth inspection. RMSZ is the root-mean-square of all Z scores of the bond lengths (or angles).

Mol	Type	Chain	Res	Link	Bond lengths			Bond angles		
					Counts	RMSZ	# Z  > 2	Counts	RMSZ	# Z  > 2
4	TYS	G	276	4	15,16,17	1.13	2 (13%)	15,22,24	1.24	2 (13%)
4	TYS	G	279	4	15,16,17	1.09	2 (13%)	15,22,24	1.07	1 (6%)

In the following table, the Chirals column lists the number of chiral outliers, the number of chiral centers analysed, the number of these observed in the model and the number defined in the Chemical Component Dictionary. Similar counts are reported in the Torsion and Rings columns. '-' means no outliers of that kind were identified.

Mol	Type	Chain	Res	Link	Chirals	Torsions	Rings
4	TYS	G	276	4	-	3/10/11/13	0/1/1/1
4	TYS	G	279	4	-	3/10/11/13	0/1/1/1

All (4) bond length outliers are listed below:

Mol	Chain	Res	Type	Atoms	Z	Observed(Å)	Ideal(Å)
4	G	276	TYS	OH-S	-2.70	1.53	1.58
4	G	279	TYS	OH-S	-2.55	1.53	1.58
4	G	276	TYS	OH-CZ	-2.52	1.38	1.42
4	G	279	TYS	OH-CZ	-2.50	1.38	1.42

All (3) bond angle outliers are listed below:

Mol	Chain	Res	Type	Atoms	Z	Observed(°)	Ideal(°)
4	G	276	TYS	OH-CZ-CE1	3.15	124.88	118.70
4	G	279	TYS	OH-CZ-CE1	2.40	123.39	118.70
4	G	276	TYS	OH-CZ-CE2	-2.17	114.46	118.70

There are no chirality outliers.

All (6) torsion outliers are listed below:

Mol	Chain	Res	Type	Atoms
4	G	276	TYS	CE2-CZ-OH-S
4	G	279	TYS	CE2-CZ-OH-S
4	G	276	TYS	N-CA-CB-CG
4	G	276	TYS	CE1-CZ-OH-S
4	G	279	TYS	CE1-CZ-OH-S
4	G	279	TYS	N-CA-CB-CG

There are no ring outliers.

1 monomer is involved in 2 short contacts:

Mol	Chain	Res	Type	Clashes	Symm-Clashes
4	G	279	TYS	2	0

## 5.5 Carbohydrates

5 monosaccharides are modelled in this entry.

In the following table, the Counts columns list the number of bonds (or angles) for which Mogul statistics could be retrieved, the number of bonds (or angles) that are observed in the model and the number of bonds (or angles) that are defined in the Chemical Component Dictionary. The Link column lists molecule types, if any, to which the group is linked. The Z score for a bond length (or angle) is the number of standard deviations the observed value is removed from the expected value. A bond length (or angle) with  $|Z| > 2$  is considered an outlier worth inspection. RMSZ is the root-mean-square of all Z scores of the bond lengths (or angles).

Mol	Type	Chain	Res	Link	Bond lengths			Bond angles		
					Counts	RMSZ	# Z  > 2	Counts	RMSZ	# Z  > 2
5	NAG	C	1	2,5	14,14,15	0.61	0	17,19,21	0.61	0
5	NAG	C	2	5	14,14,15	0.71	0	17,19,21	0.91	1 (5%)
5	MAN	C	3	5	11,11,12	0.68	0	15,15,17	0.65	0
5	MAN	C	4	5	11,11,12	0.52	0	15,15,17	0.49	0
5	MAN	C	5	5	11,11,12	0.50	0	15,15,17	0.61	1 (6%)

In the following table, the Chirals column lists the number of chiral outliers, the number of chiral centers analysed, the number of these observed in the model and the number defined in the Chemical Component Dictionary. Similar counts are reported in the Torsion and Rings columns. '-' means no outliers of that kind were identified.

Mol	Type	Chain	Res	Link	Chirals	Torsions	Rings
5	NAG	C	1	2,5	-	2/6/23/26	0/1/1/1
5	NAG	C	2	5	-	0/6/23/26	0/1/1/1
5	MAN	C	3	5	-	0/2/19/22	0/1/1/1
5	MAN	C	4	5	-	0/2/19/22	0/1/1/1
5	MAN	C	5	5	-	0/2/19/22	0/1/1/1

There are no bond length outliers.

All (2) bond angle outliers are listed below:

Mol	Chain	Res	Type	Atoms	Z	Observed(°)	Ideal(°)
5	C	2	NAG	C2-N2-C7	-2.25	119.88	122.90
5	C	5	MAN	C1-O5-C5	2.18	115.11	112.19

There are no chirality outliers.

All (2) torsion outliers are listed below:

Mol	Chain	Res	Type	Atoms
5	C	1	NAG	O5-C5-C6-O6
5	C	1	NAG	C4-C5-C6-O6

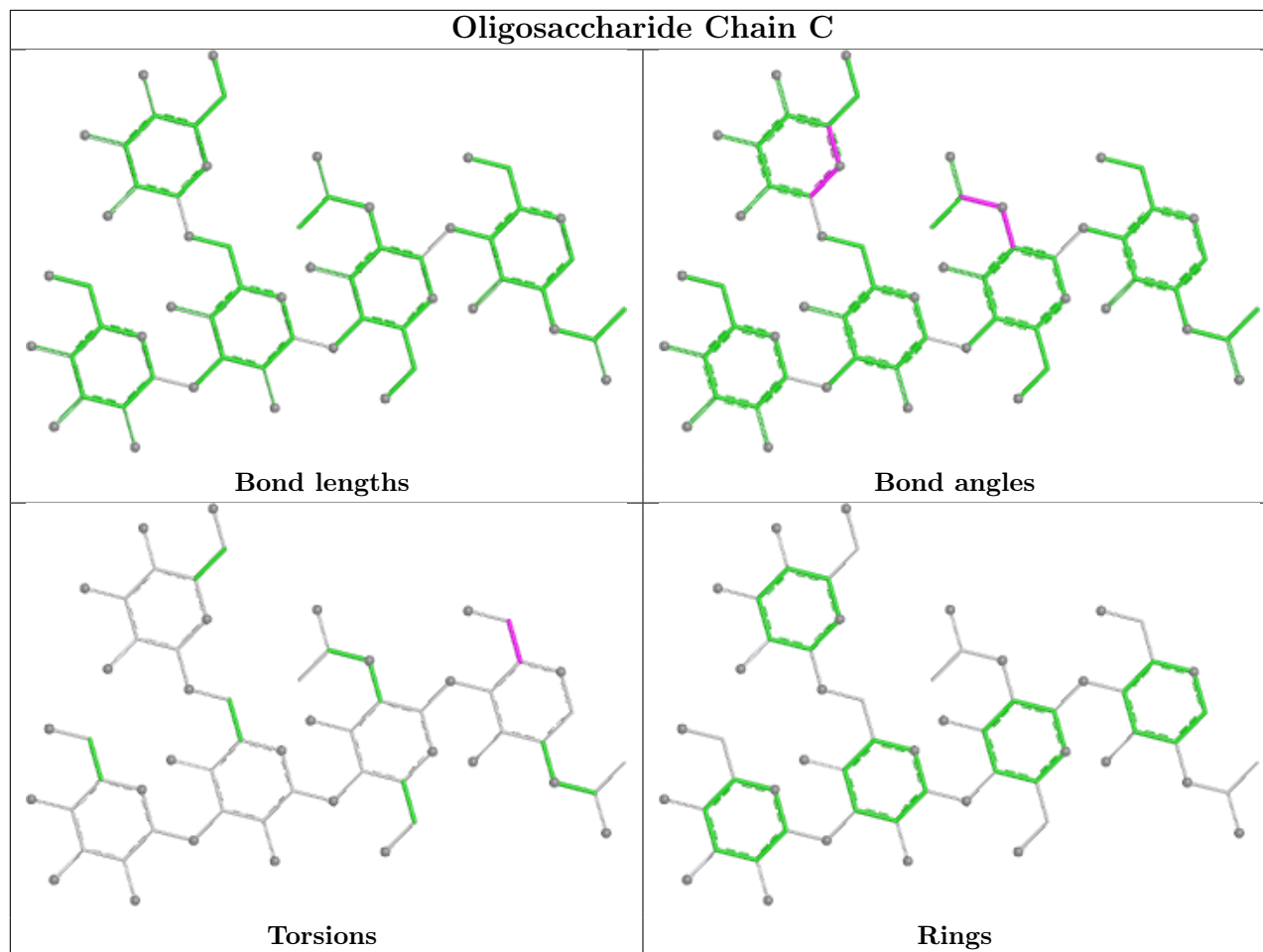
There are no ring outliers.

2 monomers are involved in 1 short contact:

Mol	Chain	Res	Type	Clashes	Symm-Clashes
5	C	2	NAG	1	0
5	C	3	MAN	1	0

The following is a two-dimensional graphical depiction of Mogul quality analysis of bond lengths,

bond angles, torsion angles, and ring geometry for oligosaccharide.



## 5.6 Ligand geometry [i](#)

Of 2 ligands modelled in this entry, 1 is monoatomic - leaving 1 for Mogul analysis.

In the following table, the Counts columns list the number of bonds (or angles) for which Mogul statistics could be retrieved, the number of bonds (or angles) that are observed in the model and the number of bonds (or angles) that are defined in the Chemical Component Dictionary. The Link column lists molecule types, if any, to which the group is linked. The Z score for a bond length (or angle) is the number of standard deviations the observed value is removed from the expected value. A bond length (or angle) with  $|Z| > 2$  is considered an outlier worth inspection. RMSZ is the root-mean-square of all Z scores of the bond lengths (or angles).

Mol	Type	Chain	Res	Link	Bond lengths			Bond angles		
					Counts	RMSZ	$\# Z  > 2$	Counts	RMSZ	$\# Z  > 2$
7	NAG	G	601	4	14,14,15	0.63	0	17,19,21	0.65	0

In the following table, the Chirals column lists the number of chiral outliers, the number of chiral centers analysed, the number of these observed in the model and the number defined in the Chemical Component Dictionary. Similar counts are reported in the Torsion and Rings columns.

'-' means no outliers of that kind were identified.

Mol	Type	Chain	Res	Link	Chirals	Torsions	Rings
7	NAG	G	601	4	-	0/6/23/26	0/1/1/1

There are no bond length outliers.

There are no bond angle outliers.

There are no chirality outliers.

There are no torsion outliers.

There are no ring outliers.

No monomer is involved in short contacts.

## 5.7 Other polymers [i](#)

There are no such residues in this entry.

## 5.8 Polymer linkage issues [i](#)

There are no chain breaks in this entry.

## 6 Fit of model and data [i](#)

### 6.1 Protein, DNA and RNA chains [i](#)

In the following table, the column labelled ‘#RSRZ > 2’ contains the number (and percentage) of RSRZ outliers, followed by percent RSRZ outliers for the chain as percentile scores relative to all X-ray entries and entries of similar resolution. The OWAB column contains the minimum, median, 95<sup>th</sup> percentile and maximum values of the occupancy-weighted average B-factor per residue. The column labelled ‘Q < 0.9’ lists the number of (and percentage) of residues with an average occupancy less than 0.9.

Mol	Chain	Analysed	<RSRZ>	#RSRZ>2	OWAB(Å <sup>2</sup> )	Q<0.9
1	A	36/36 (100%)	0.58	6 (16%) 4 5	24, 45, 115, 119	0
2	B	259/259 (100%)	-0.48	2 (0%) 82 83	17, 31, 52, 86	0
3	P	3/3 (100%)	-0.42	0 100 100	23, 23, 24, 25	0
4	G	282/290 (97%)	0.69	33 (11%) 9 10	29, 56, 113, 124	0
All	All	580/588 (98%)	0.16	41 (7%) 22 24	17, 43, 101, 124	0

All (41) RSRZ outliers are listed below:

Mol	Chain	Res	Type	RSRZ
4	G	237	LYS	6.4
1	A	1(F)	GLY	5.7
1	A	1(H)	THR	5.7
4	G	234	VAL	5.0
4	G	284	THR	4.1
4	G	273	THR	4.0
4	G	236	VAL	3.8
4	G	251	SER	3.7
4	G	1	HIS	3.6
4	G	12	HIS	3.5
4	G	10	ALA	3.4
4	G	76	LEU	3.4
1	A	14(M)	GLY	3.3
1	A	1(D)	GLY	3.3
4	G	271	GLY	3.2
4	G	124	GLY	3.2
1	A	1(G)	PHE	3.2
4	G	254	PHE	3.2
4	G	11	SER	2.8
4	G	9	VAL	2.7
4	G	270	GLU	2.7

*Continued on next page...*

*Continued from previous page...*

Mol	Chain	Res	Type	RSRZ
4	G	34	THR	2.6
4	G	77	PRO	2.6
4	G	282	GLU	2.5
4	G	233	GLY	2.5
4	G	238	ALA	2.5
4	G	13	LEU	2.4
4	G	195	HIS	2.4
4	G	33	THR	2.4
4	G	250	ASN	2.3
4	G	15	VAL	2.3
4	G	283	ASP	2.3
1	A	15	ARG	2.3
2	B	77(A)	ARG	2.3
2	B	247	GLU	2.3
4	G	52	MET	2.2
4	G	74	GLY	2.2
4	G	100	PRO	2.1
4	G	99	LEU	2.1
4	G	117	LEU	2.1
4	G	240	THR	2.0

## 6.2 Non-standard residues in protein, DNA, RNA chains [i](#)

In the following table, the Atoms column lists the number of modelled atoms in the group and the number defined in the chemical component dictionary. The B-factors column lists the minimum, median, 95<sup>th</sup> percentile and maximum values of B factors of atoms in the group. The column labelled 'Q< 0.9' lists the number of atoms with occupancy less than 0.9.

Mol	Type	Chain	Res	Atoms	RSCC	RSR	B-factors(Å <sup>2</sup> )	Q<0.9
4	TYS	G	276	16/17	0.87	0.13	41,50,75,76	0
4	TYS	G	279	16/17	0.92	0.11	30,42,56,59	0

## 6.3 Carbohydrates [i](#)

In the following table, the Atoms column lists the number of modelled atoms in the group and the number defined in the chemical component dictionary. The B-factors column lists the minimum, median, 95<sup>th</sup> percentile and maximum values of B factors of atoms in the group. The column labelled 'Q< 0.9' lists the number of atoms with occupancy less than 0.9.

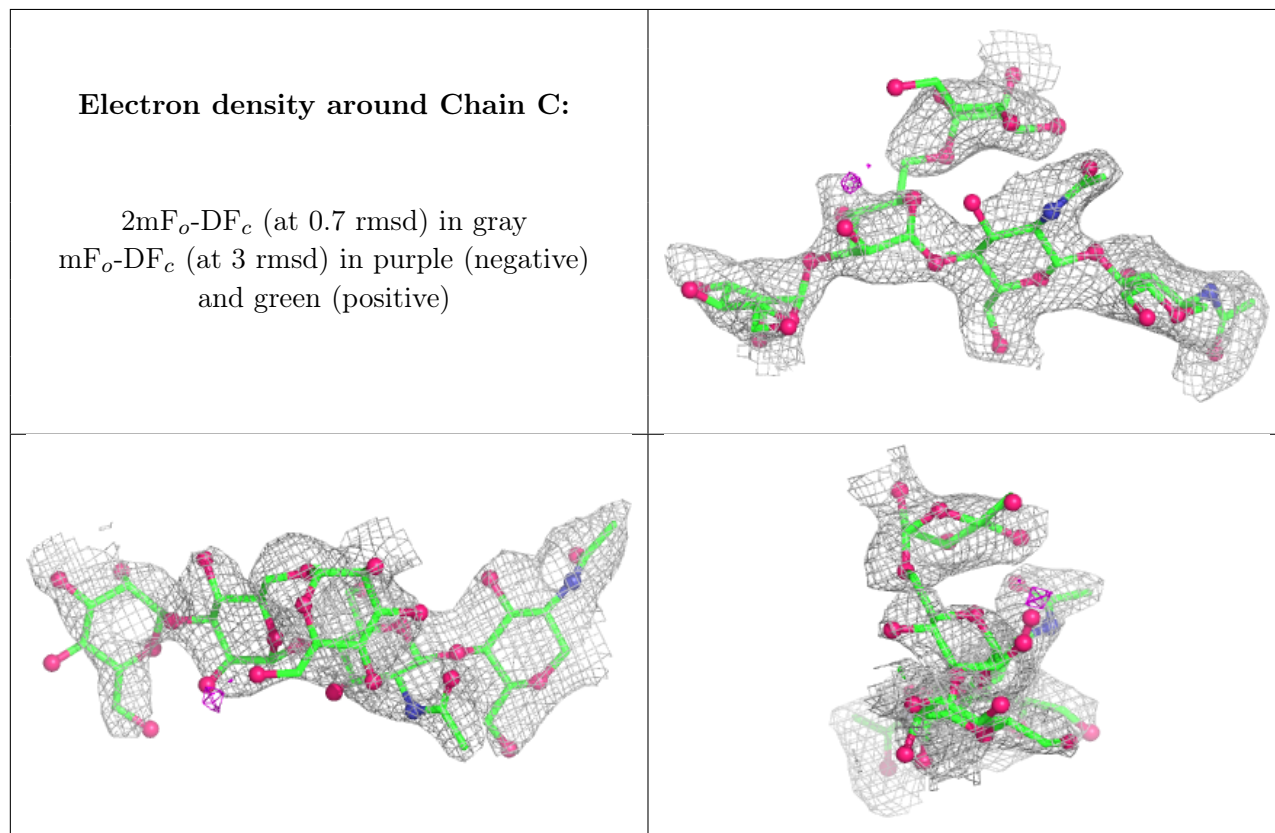
Mol	Type	Chain	Res	Atoms	RSCC	RSR	B-factors(Å <sup>2</sup> )	Q<0.9
5	NAG	C	1	14/15	-	-	61,68,79,79	0

*Continued on next page...*

Continued from previous page...

Mol	Type	Chain	Res	Atoms	RSCC	RSR	B-factors( $\text{\AA}^2$ )	Q<0.9
5	NAG	C	2	14/15	-	-	69,80,85,86	0
5	MAN	C	3	11/12	-	-	83,89,92,96	0
5	MAN	C	4	11/12	-	-	93,99,102,102	0
5	MAN	C	5	11/12	-	-	74,78,82,85	0

The following is a graphical depiction of the model fit to experimental electron density for oligosaccharide. Each fit is shown from different orientation to approximate a three-dimensional view.



## 6.4 Ligands [i](#)

In the following table, the Atoms column lists the number of modelled atoms in the group and the number defined in the chemical component dictionary. The B-factors column lists the minimum, median, 95<sup>th</sup> percentile and maximum values of B factors of atoms in the group. The column labelled 'Q< 0.9' lists the number of atoms with occupancy less than 0.9.

Mol	Type	Chain	Res	Atoms	RSCC	RSR	B-factors( $\text{\AA}^2$ )	Q<0.9
7	NAG	G	601	14/15	0.66	0.11	66,78,82,82	0
6	CL	B	400	1/1	0.96	0.15	35,35,35,35	0

## 6.5 Other polymers [i](#)

There are no such residues in this entry.